

Highway



RIDE-WINGS

Highway

- 1. Low Cost Per Kilometer.
- 2. Irregular Wear Resistance.
- 3. Retreadability.



LTL812

LDL813

LDL831

LAL836

Technological Highlights

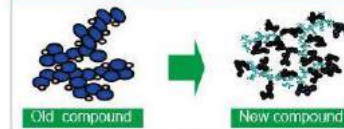
NO.1



More wear resistance

- ▶ Add the tread width and groove depth, increasing the wearing rubber by 10%.

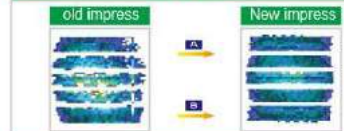
NO.2



Wear resistant compound or chipping resistant compound is available.

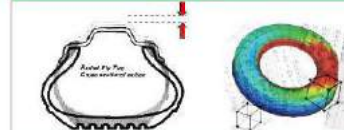
- ▶ The newly developed compound for wear resistance contains the famous carbon black, CARBOT, imported from the USA. The road test shows that the road haul can be increased by 10%.

NO.3



- ▶ Reduce premature irregular wear, optimize wear-rate in the arc of crown area and excellent ground contact, increase the travel distance and mileage by 10%.

NO.4



Excellent Retreadability

- ▶ Optimize contour for decreasing deformation and heat to increase tire life.

NO.5



The first company using ST/UT Steel cord in China

- ▶ With no welding spots steels, the strain resistance can be promoted by 40% increasing the service life of carcass and improving the retread performance.

NO.6



- ▶ Retread indicator helps to reduce belt damage when retreading.



LDL831

Radial truck tire(Long Haul)



Size	Ply Rating	Load Index	Speed Symbols	Rim	Max Load and Inflated Pressure				Overall Diameter (mm)	Section Width (mm)	Tread Depth (mm)	Operative Norm
					Dual		Single					
					kg	kPa	kg	kPa				
10.00R20	18	149/146	K	7.5	3000	930	3250	930	1054	278	21.0	GB
11.00R20	16	150/147	K	8.0	3075	830	3350	830	1085	293	21.0	GB
11.00R20	18	152/148	K	8.0	3250	930	3550	930	1085	293	21.0	GB
11R22.5	16	148/146	L	8.25	2900	850	3150	850	1050	279	22.0	ETRTO
11R22.5	14	144/142	L	8.25	2650	720	2800	720	1054	279	22.0	TRA
11R22.5	16	146/143	L	8.25	2725	830	3000	830	1054	279	22.0	TRA
12.00R20	18	154/151	K	8.5	3450	830	3750	830	1125	315	21.5	TRA
12.00R20	20	156/153	K	8.5	3650	900	4000	900	1125	315	21.5	GB
12R22.5	16	152/148	L	9.00	3150	850	3550	850	1084	300	23.0	ETRTO
12R22.5	16	150/147	L	9.00	3075	830	3350	830	1085	300	23.0	GB
285/70R19.5	16	140/137	M	8.25	2300	725	2500	725	895	283	23.0	ETRTO
285/70R19.5	18	146/144	M	8.25	2800	900	3000	900	895	283	23.0	ETRTO
285/70R19.5	18	150/148	J	8.25	3150	900	3350	900	895	283	23.0	ETRTO
295/80R22.5	16	152/148	L	9.00	3150	850	3550	850	1044	298	23.0	ETRTO
295/80R22.5	16	150/147	L	9.00	3075	830	3350	830	1044	298	23.0	GB
315/80R22.5	16	152/148	M	9.75	3150	900	3550	900	950	313	23.0	ETRTO
315/70R22.5	16	154/150 (152/148)	L(M)	9.00	3350	900	3750	900	1014	312	23.0	ETRTO
315/70R22.5	18	156/150 (154/150)	L(M)	9.00	3350	900	4000	900	1014	312	23.0	ETRTO
315/80R22.5	18	154/151	M	9.00	3450	830	3750	830	1076	312	23.0	GB
315/80R22.5	18	154/150	M	9.00	3350	825	3750	825	1076	312	23.0	ETRTO
315/80R22.5	20	156/150	L	9.00	3350	850	4000	850	1076	312	23.0	ETRTO

- Typical block pattern design make good towing and grip on wet and dry road.
- Strong wear resistance and long life.
- Retreadability.



LDL813

Radial truck tire(Long Haul)



Size	Ply Rating	Load Index	Speed Symbols	Rim	Max Load and Inflated Pressure				Overall Diameter (mm)	Section Width (mm)	Tread Depth (mm)	Operative Norm
					Dual		Single					
					kg	kPa	kg	kPa				
11.00R20	18	152/149	K	8.0	3250	930	3550	930	1085	293	20.0	GB
11R22.5	16	148/145	L	8.25	2900	850	3150	850	1050	279	20.0	ETRTO
11R22.5	14	144/142	L	8.25	2650	720	2800	720	1054	279	20.0	TRA
11R22.5	16	146/143	L	8.25	2725	830	3000	830	1054	279	20.0	TRA
12R22.5	16	150/147	L	9.00	3075	830	3350	830	1085	300	21.0	TRA
12R22.5	16	152/148	L	9.00	3150	850	3550	850	1084	300	21.0	ETRTO
12R22.5	18	152/149	L	9.00	3250	930	3550	930	1085	300	21.0	GB
13R22.5	18	156/150	L	9.75	3350	875	4000	875	1124	320	21.0	ETRTO
13R22.5	18	154/151	L	9.75	3450	830	3750	830	1124	320	21.0	GB
315/80R22.5	18	154/151	L	9.00	3450	830	3750	830	1076	312	21.0	TRA
315/80R22.5	18	154/150	L	9.00	3350	825	3750	825	1076	312	21.0	ETRTO
315/80R22.5	20	156/150	L	9.00	3350	850	4000	850	1076	312	21.0	ETRTO

- Suitable for drive axle of trucks riding on highway.
- Long life.
- Good grip performance.
- Low eccentric wear.





LTL812 
Radial truck and bus tire (Long Haul)

Size	Ply Rating	Load Index	Speed Symbols	Rim	Max Load and Inflated Pressure				Overall Diameter (mm)	Section Width (mm)	Tread Depth (mm)	Operative Norm
					Dual		Single					
					kg	kPa	kg	kPa				
9R22.5	14	136/134	M	6.75	2120	830	2240	830	974	229	15.0	TRA
10R22.5	14	141/139	L	7.50	2430	790	2575	790	1019	254	17.0	TRA
11.00R20	16	150/147	K	8.0	3075	830	3350	830	1085	293	16.0	GB
11.00R20	18	152/145	K	8.0	3250	930	3550	930	1085	293	16.0	GB
11R22.5	14	144/142	M	8.25	2650	720	2800	720	1054	279	16.0	TRA
11R22.5	16	146/143	M	8.25	2725	830	3000	830	1054	279	16.0	TRA
11R22.5	16	148/145	M	8.25	2900	850	3150	850	1050	279	16.0	ETRTO
12R22.5	16	150/147	M	9.00	3075	830	3350	830	1085	300	17.0	GB
12R22.5	16	152/148	M	9.00	3150	850	3550	850	1084	300	17.0	ETRTO
275/70R22.5	16	148/145	M	8.25	2900	900	3150	900	958	276	16.0	ETRTO
275/70R22.5	16	144/141	M	8.25	2575	830	2800	830	958	276	16.0	GB
285/70R19.5	16	140/137	M	8.25	2300	725	2500	725	895	283	16.0	ETRTO
285/70R19.5	18	146/144	M	8.25	2800	900	3000	900	895	283	16.0	ETRTO
285/70R19.5	18	150/148	J	8.25	3150	900	3350	900	895	283	16.0	ETRTO
295/80R22.5	16	152/148	M	9.00	3150	850	3550	850	1044	298	17.0	ETRTO
295/80R22.5	16	150/147	M	9.00	3075	830	3350	830	1044	298	17.0	GB
295/80R22.5	18	152/149	M	9.00	3250	900	3550	900	1044	298	17.0	GB
315/60R22.5	16	152/148	L	9.75	3150	900	3550	900	950	313	17.0	ETRTO
315/70R22.5	16	154/150 (152/148)	L(M)	9.00	3350	900	3750	900	1014	312	17.0	ETRTO
315/70R22.5	18	156/150 (154/150)	L(M)	9.00	3350	900	4000	900	1014	312	17.0	ETRTO
315/80R22.5	18	154/151	M	9.00	3450	830	3750	830	1076	312	17.0	GB
315/80R22.5	20	156/150	M	9.00	3350	850	4000	850	1076	312	17.0	ETRTO

- Suitable for drive and steer axle of trucks riding on highway.
- Long life.
- Retreadability.
- Low eccentric wear.



LAL836 
Radial Truck Tire on Highway (Long Haul)

Size	Ply Rating	Load Index	Speed Symbols	Rim	Max Load and Inflated Pressure				Overall Diameter (mm)	Section Width (mm)	Tread Depth (mm)	Operative Norm
					Dual		Single					
					kg	kPa	kg	kPa				
11.00R20	16	150/147	K	8.0	3075	830	3350	830	1085	293	17.0	TRA
11.00R20	18	152/149	K	8.0	3250	930	3550	930	1085	293	17.0	GB
11R22.5	14	144/142	M	8.25	2650	720	2800	720	1054	279	16.5	TRA
11R22.5	16	146/143	M	8.25	2725	830	3000	830	1054	279	16.5	TRA
11R22.5	16	148/145	M	8.25	2900	850	3150	850	1050	279	16.5	ETRTO
12.00R20	18	154/151	K	8.5	3450	830	3750	830	1125	315	18.5	GB
12.00R20	20	156/153	K	8.5	3650	900	4000	900	1125	315	18.5	GB
12R22.5	16	152/148	L	9.00	3150	850	3550	850	1084	300	18.0	ETRTO
12R22.5	16	150/147	L	9.00	3075	830	3350	830	1085	300	18.0	TRA
13R22.5	18	156/150	L	9.75	3350	875	4000	875	1124	320	18.0	ETRTO
13R22.5	18	154/151	L	9.75	3450	830	3750	830	1124	320	18.0	GB
295/80R22.5	16	152/148	M	9.00	3150	850	3550	850	1044	298	16.0	ETRTO
295/80R22.5	16	150/147	M	9.00	3075	830	3350	830	1044	298	16.0	GB
295/80R22.5	18	152/149	M	9.00	3250	900	3550	900	1044	298	16.0	GB
315/80R22.5	18	154/150	L	9.00	3350	825	3750	825	1076	312	18.0	ETRTO
315/80R22.5	18	154/151	L	9.00	3450	830	3750	830	1076	312	18.0	GB
315/80R22.5	20	156/150	L	9.00	3350	850	4000	850	1076	312	18.0	ETRTO

- Good handling and driving.
- Long life.
- Retreadability.
- Low eccentric wear.





LSL611

Radial Truck Tire on Highway (Long Haul)



Size	Ply Rating	Load Index	Speed Symbols	Rim	Max Load and Inflated Pressure				Overall Diameter (mm)	Section Width (mm)	Tread Depth (mm)	Operative Norm
					Dual		Single					
					kg	kPa	kg	kPa				
11R22.5	14	144/142	M	8.25	2650	720	2800	720	1054	279	15.0	TRA
11R22.5	16	146/143	M	8.25	2725	830	3000	830	1054	279	15.0	TRA
11R22.5	16	148/145	M	8.25	2900	850	3150	850	1050	279	15.0	ETRTO
12R22.5	16	152/148	M	9.00	3150	850	3550	850	1084	300	17.0	ETRTO
12R22.5	16	150/147	M	9.00	3075	830	3350	830	1085	300	17.0	TRA

- Long Life.
- Unique Design.
- Fuel Efficiency.
- Retreadable.



LDL612

Radial Truck Tire on Highway (Long Haul)



Size	Ply Rating	Load Index	Speed Symbols	Rim	Max Load and Inflated Pressure				Overall Diameter (mm)	Section Width (mm)	Tread Depth (mm)	Operative Norm
					Dual		Single					
					kg	kPa	kg	kPa				
11R22.5	16	148/145	M	8.25	2900	850	3150	850	1050	279	24.5	ETRTO
11R22.5	14	144/142	M	8.25	2650	720	2800	720	1054	279	24.5	TRA
11R22.5	16	146/143	M	8.25	2725	830	3000	830	1054	279	24.5	TRA
12R22.5	16	150/147	M	9.00	3075	830	3350	830	1085	300	22.0	TRA
12R22.5	16	152/148	M	9.00	3150	850	3550	850	1084	300	22.0	ETRTO
12R22.5	18	152/149	M	9.00	3250	930	3550	930	1085	300	22.0	GB

- Long Life.
- Unique Design.
- Fuel Efficiency.
- Retreadable.



LTL613

Radial Truck Tire on Highway (Long Haul)



Size	Ply Rating	Load Index	Speed Symbols	Rim	Max Load and Inflated Pressure				Overall Diameter (mm)	Section Width (mm)	Tread Depth (mm)	Operative Norm
					Dual		Single					
					kg	kPa	kg	kPa				
11R22.5	16	148/145	M	8.25	2900	850	3150	850	1050	279	24.5	ETRTO
11R22.5	14	144/142	M	8.25	2650	720	2800	720	1054	279	24.5	TRA
11R22.5	16	146/143	M	8.25	2725	830	3000	830	1054	279	24.5	TRA

- Unique Design.
- Fuel Efficiency.
- Retreadable.



LFL827

Radial Truck Tire on Highway (Long Haul)



Size	Ply Rating	Load Index	Speed Symbols	Rim	Max Load and Inflated Pressure				Overall Diameter (mm)	Section Width (mm)	Tread Depth (mm)	Operative Norm
					Dual		Single					
					kg	kPa	kg	kPa				
11.00R20	16	150/147	L	8.0	3075	830	3350	830	1079	289	14.0	TRA
11.00R20	18	152/149	L	8.0	3250	930	3550	930	1079	289	14.0	GB
12R22.5	16	150/147	M	9.00	3075	830	3350	830	1079	296	13.0	GB
12R22.5	18	152/149	L	9.00	3250	930	3550	930	1079	296	13.0	GB
12R22.5	16	152/148	L	9.00	3150	850	3550	850	1078	296	13.0	ETRTO
295/80R22.5	16	150/147	M	9.00	3075	830	3350	830	1038	204	14.0	GB
295/80R22.5	18	152/149	M	9.00	3250	900	3550	900	1038	294	14.0	GB
295/80R22.5	14	150/146	M	9.00	3000	800	3350	800	1038	294	14.0	ETRTO
295/80R22.5	16	152/148	M	9.00	3150	850	3550	850	1038	294	14.0	ETRTO
315/80R22.5	18	154/150	M	9.00	3350	825	3750	825	1070	308	13.0	ETRTO
315/80R22.5	20	156/150	L	9.00	3350	850	4000	850	1070	308	13.0	ETRTO
315/80R22.5	18	154/151	M	9.00	3450	830	3750	830	1070	308	13.0	TRA
385/65R22.5	18	158	K	11.75	—	—	4250	850	1066	385	13.0	ETRTO
385/65R22.5	20	160	J	11.75	—	—	4500	900	1066	385	13.0	ETRTO

- Low rolling resistance-Circumferential straight groove design.
- Eccentric wear resistance-groove design in shoulder for eccentric wear resistance.





LDL829

Radial Truck Tire (long haul)



Size	Ply Rating	Load Index	Speed Symbols	Rim	Max Load and Inflated Pressure				Overall Diameter (mm)	Section Width (mm)	Tread Depth (mm)	Operative Norm
					Dual		Single					
					kg	kPa	kg	kPa				
10.00R20	16	146/143	K	7.5	2725	830	3000	830	1048	274	16.0	GB
10.00R20	18	149/146	K	7.5	3000	930	3250	930	1048	274	16.0	GB
11.00R20	16	150/147	L	8.0	3075	830	3350	830	1079	289	17.0	TRA
11.00R20	18	152/149	L	8.0	3250	930	3550	930	1079	289	17.0	GB
11R22.5	14	144/142	M	8.25	2650	720	2800	720	1048	275	15.0	TRA
11R22.5	16	146/143	M	8.25	2725	830	3000	830	1048	275	15.0	TRA
11R22.5	16	148/145	L	8.25	2900	850	3150	850	1044	275	15.0	ETRTO
12.00R20	18	154/151	L	8.5	3450	830	3750	830	1119	311	15.5	TRA
12.00R20	20	156/153	K	8.5	3650	900	4000	900	1119	311	15.5	GB
12R22.5	16	150/147	L	9.00	3075	830	3350	830	1079	296	15.0	GB
12R22.5	18	152/149	K	9.00	3250	930	3550	930	1079	296	15.0	GB
12R22.5	16	152/148	L	9.00	3150	850	3550	850	1078	296	15.0	ETRTO
13R22.5	16	154/150	L	9.75	3350	850	3750	850	1118	316	15.0	ETRTO
13R22.5	18	156/150	K	9.75	3350	875	4000	875	1118	316	15.0	ETRTO
295/80R22.5	16	152/148	M	9.00	3150	850	3550	850	1038	294	15.5	ETRTO
295/80R22.5	16	150/147	M	9.00	3075	830	3350	830	1038	294	15.5	GB
295/80R22.5	18	152/149	M	9.00	3250	900	3550	900	1038	294	15.5	GB
315/80R22.5	18	154/150	L	9.00	3350	825	3750	825	1070	308	16.0	ETRTO
315/80R22.5	18	154/151	L	9.00	3450	830	3750	830	1070	308	16.0	GB
315/80R22.5	20	156/150	K	9.00	3350	850	4000	850	1070	308	16.0	ETRTO

- Typical block pattern design makes good towing and grip on wet and dry road.
- Good drainage.
- Good wet traction.



LAL828

Radial Truck Tire (long haul)



Size	Ply Rating	Load Index	Speed Symbols	Rim	Max Load and Inflated Pressure				Overall Diameter (mm)	Section Width (mm)	Tread Depth (mm)	Operative Norm
					Dual		Single					
					kg	kPa	kg	kPa				
12R22.5	16	150/147	L	9.00	3075	830	3350	830	1079	296	14.0	TRA
12R22.5	18	152/149	K	9.00	3250	930	3550	930	1079	296	14.0	GB
12R22.5	16	152/148	L	9.00	3150	850	3550	850	1078	296	14.0	ETRTO
295/80R22.5	16	150/147	M	9.00	3075	830	3350	830	1038	294	15.0	GB
295/80R22.5	16	152/149	M	9.00	3250	900	3550	900	1038	294	15.0	GB
295/80R22.5	18	152/148	M	9.00	3150	850	3550	850	1038	294	15.0	ETRTO

- Typical block pattern design makes good towing and grip on wet and dry road.
- good drainage.
- Good wet traction.



LDL810

Radial Truck Tire (Long Haul)

Size	Ply Rating	Load Index	Speed Symbols	Rim	Max Load and Inflated Pressure				Overall Diameter (mm)	Section Width (mm)	Tread Depth (mm)	Operative Norm
					Dual		Single					
					kg	kPa	kg	kPa				
12R22.5	16	152/148	L	9.00	3150	850	3550	850	1084	300	20.0	ETRTO

- Suitable for drive axle of trucks riding on highway.
- Good braking and grip on wet road.





LTL809

Radial Truck Tire on Highway (Long Haul)

Size	Ply Rating	Load Index	Speed Symbols	Rim	Max Load and Inflated Pressure				Overall Diameter (mm)	Section Width (mm)	Tread Depth (mm)	Operative Norm
					Dual		Single					
					kg	kPa	kg	kPa				
11.00R20	16	150/147	L	8.0	3075	830	3350	830	1085	293	16.0	TRA
11.00R20	18	152/149	L	8.0	3250	930	3550	930	1085	293	16.0	GB
12R22.5	16	152/148	L	9.00	3150	850	3550	850	1084	300	16.0	ETRTO

- Good handling and high-speed performance.
- Long life.
- Low rolling resistance.
- Good braking and grip on wet road.



LLF02

Radial Truck Tire (Long Haul)

Size	Ply Rating	Load Index	Speed Symbols	Rim	Max Load and Inflated Pressure				Overall Diameter (mm)	Section Width (mm)	Tread Depth (mm)	Operative Norm
					Dual		Single					
					kg	kPa	kg	kPa				
9.00R20	14	141/139	L	7.0	2430	790	2575	790	1019	259	14.0	TRA
9.00R20	16	144/142	L	7.0	2650	900	2800	900	1019	259	14.0	GB
10.00R20	16	146/143	M	7.5	2725	830	3000	830	1054	278	15.5	TRA
10.00R20	18	149/146	L	7.5	3000	930	3250	930	1054	278	15.5	GB
11.00R20	16	150/147	L	8.0	3075	830	3350	830	1085	293	15.5	TRA
11.00R20	18	152/149	L	8.0	3250	930	3550	930	1085	293	15.5	GB
12.00R20	18	154/151	L	8.5	3450	830	3750	830	1125	315	16.0	TRA
12R22.5	16	152/148	L	9.00	3150	850	3550	850	1084	300	14.5	ETRTO
13R22.5	18	156/150	K	9.75	3350	875	4000	875	1124	320	16.5	ETRTO
295/80R22.5	16	152/148	M	9.00	3150	850	3550	850	1044	298	14.5	ETRTO
295/80R22.5	16	150/147	M	9.00	3075	830	3350	830	1044	298	14.5	GB
295/60R22.5	16	149/146	M	9.00	3000	900	3250	900	926	292	14.5	ETRTO
315/80R22.5	18	154/150	M	9.00	3350	825	3750	825	1076	312	14.5	ETRTO
315/80R22.5	20	156/150	L	9.00	3350	850	4000	850	1076	312	14.5	ETRTO

- Special for trucks of different tonnages which run on highway.
- Stable and safe when run on wet and slippery road.
- Low fuel consumption.



LAL800

Radial Truck Tire on Highway (Long Haul)

Size	Ply Rating	Load Index	Speed Symbols	Rim	Max Load and Inflated Pressure				Overall Diameter (mm)	Section Width (mm)	Tread Depth (mm)	Operative Norm
					Dual		Single					
					kg	kPa	kg	kPa				
11.00R20	16	150/147	L	8.0	3075	830	3350	830	1085	293	16.0	GB
11.00R20	18	152/149	K	8.0	3250	930	3550	930	1085	293	16.0	TRA
11R22.5	14	144/142	L	8.2E	2650	720	2800	720	1054	279	16.0	TRA
11R22.5	16	146/143	L	8.2E	2725	830	3000	830	1054	279	16.0	TRA
11R22.5	16	148/145	L	8.2E	2900	850	3150	850	1050	279	16.0	ETRTO
12R22.5	16	152/148	L	9.0C	3150	850	3550	850	1084	300	16.0	ETRTO
315/80R22.5	18	154/151	M	9.0C	3450	830	3750	830	1076	312	16.0	GB
315/80R22.5	18	154/150	L	9.0C	3350	825	3750	825	1076	312	16.0	ETRTO
315/80R22.5	20	156/150	M	9.0C	3350	850	4000	850	1076	312	16.0	ETRTO

- Good handling and driving.
- Long life.



LLF06

Radial Truck Tire and Bus Tire (Long Haul)

Size	Ply Rating	Load Index	Speed Symbols	Rim	Max Load and Inflated Pressure				Overall Diameter (mm)	Section Width (mm)	Tread Depth (mm)	Operative Norm
					Dual		Single					
					kg	kPa	kg	kPa				
9.00R20	14	141/139	L	7.0	2430	790	2575	790	1019	259	14.0	TRA
9.00R20	16	144/142	K	7.0	2650	900	2800	900	1019	259	14.0	GB
10.00R20	16	146/143	L	7.5	2725	830	3000	830	1054	278	14.5	TRA
10.00R20	18	149/146	K	7.5	3000	930	3250	930	1054	278	14.5	GB
11.00R20	16	150/147	K	8.0	3075	830	3350	830	1085	293	15.5	GB
11.00R20	18	152/149	K	8.0	3250	930	3550	930	1085	293	15.5	GB
11R22.5	14	144/142	M	8.25	2650	720	2800	720	1054	279	14.5	TRA
11R22.5	16	146/143	M	8.25	2725	830	3000	830	1054	279	14.5	TRA
12.00R20	18	154/151	K	8.5	3450	830	3750	830	1125	315	15.5	TRA
315/80R22.5	18	154/150	M	9.00	3350	825	3750	825	1076	312	14.5	ETRTO
315/80R22.5	20	156/150	L	9.00	3350	850	4000	850	1076	312	14.5	ETRTO

- Suitable for all position of the buses and the steer and trailer axle of the trucks running on highway.
- Low rolling resistance.





LLF16

Radial Truck and Bus Tire (Long Haul)

Size	Ply Rating	Load Index	Speed Symbols	Rim	Max Load and Inflated Pressure				Overall Diameter (mm)	Section Width (mm)	Tread Depth (mm)	Operative Norm
					Dual		Single					
					kg	kPa	kg	kPa				
11R22.5	14	144/142	M	8.25	2650	720	2800	720	1054	279	14.5	TRA
11R22.5	16	146/143	M	8.25	2725	830	3000	830	1054	279	14.5	TRA
11R22.5	16	148/145	L	8.25	2900	850	3150	850	1050	279	14.5	ETRTO
11R24.5	14	146/143	M	8.25	2725	720	3000	720	1104	279	14.5	TRA
11R24.5	16	149/146	M	8.25	3000	830	3250	830	1104	279	14.5	TRA
285/75R24.5	14	144/141	M	8.25	2575	760	2800	760	1050	283	14.5	TRA
285/75R24.5	16	147/144	M	8.25	2800	830	3075	830	1050	283	14.5	TRA
295/75R22.5	14	144/141	M	9.00	2575	760	2800	760	1014	298	14.5	TRA
295/75R22.5	16	146/143	M	9.00	2725	830	3000	830	1014	298	14.5	TRA

- Suitable for all position of the buses and the steer and trailer axle of the trucks running on highway.



F805

Radial Truck and Bus Tire (Long Haul)

Size	Ply Rating	Load Index	Speed Symbols	Rim	Max Load and Inflated Pressure				Overall Diameter (mm)	Section Width (mm)	Tread Depth (mm)	Operative Norm
					Dual		Single					
					kg	kPa	kg	kPa				
275/70R22.5	16	148/145	M	8.25	2900	900	3150	900	958	276	14.5	ETRTO
275/70R22.5	16	144/141	M	8.25	2575	830	2800	830	958	276	14.5	GB
305/70R22.5	14	150/148	L	9.00	3150	850	3350	850	1000	305	14.5	ETRTO
305/70R22.5	16	152/148	L	9.00	3150	900	3550	900	1000	305	14.5	ETRTO
305/70R22.5	16	152/148	L	9.00	3150	900	3550	900	1000	305	14.5	ETRTO
315/70R22.5	14	152/148	M	9.00	3150	850	3550	850	1014	312	14.5	ETRTO
315/70R22.5	16	154/150	M	9.00	3350	900	3750	900	1014	312	14.5	ETRTO

- Suitable for all position of buses and the steer and trailer axle of the trucks running on highway.



F816

Radial Truck and Bus Tire (Long Haul)

Size	Ply Rating	Load Index	Speed Symbols	Rim	Max Load and Inflated Pressure				Overall Diameter (mm)	Section Width (mm)	Tread Depth (mm)	Operative Norm
					Dual		Single					
					kg	kPa	kg	kPa				
8.25R20	16	139/137	K	6.5	2300	930	2430	930	974	236	14.0	GB
9.00R20	16	144/142	K	7.0	2650	900	2800	900	1019	259	14.5	GB
10.00R20	16	146/143	L	7.5	2725	830	3000	830	1054	278	15.5	TRA
11.00R20	16	150/147	L	8.0	3075	830	3350	830	1085	293	15.5	GB
11.00R20	18	152/149	L	8.0	3250	930	3550	930	1085	293	15.5	GB
11R22.5	14	144/142	M	8.25	2650	720	2800	720	1054	279	14.5	TRA
11R22.5	16	146/143	M	8.25	2725	830	3000	830	1054	279	14.5	TRA
11R22.5	16	148/145	M	8.25	2900	850	3150	850	1050	279	14.5	ETRTO
11R24.5	14	146/143	M	8.25	2725	720	3000	720	1104	279	14.5	TRA
11R24.5	16	149/146	M	8.25	3000	830	3250	830	1104	279	14.5	TRA
12.00R20	18	154/151	L	8.5	3450	830	3750	830	1125	315	15.5	TRA
12R22.5	16	152/148	L	9.00	3150	850	3550	850	1084	300	16.0	ETRTO
12R22.5	16	150/147	M	9.00	3075	830	3350	830	1085	300	16.0	GB
285/75R24.5	14	144/141	M	8.25	2575	760	2800	760	1050	283	14.5	TRA
285/75R24.5	16	147/144	M	8.25	2800	830	3075	830	1050	283	14.5	TRA
295/75R22.5	14	144/141	M	9.00	2575	760	2800	760	1014	298	14.5	TRA
295/75R22.5	16	146/143	M	9.00	2725	830	3000	830	1014	298	14.5	TRA

- Good handling.
- Low rolling resistance.





F860

Radial Truck and Bus Tire (Long Haul)

Size	Ply Rating	Load Index	Speed Symbols	Rim	Max Load and Inflated Pressure				Overall Diameter (mm)	Section Width (mm)	Tread Depth (mm)	Operative Norm
					Dual		Single					
					kg	kPa	kg	kPa				
10.00R20	16	146/143	L	7.5	2725	830	3000	830	1054	278	14.5	TRA
10.00R20	18	149/146	K	7.5	3000	930	3250	930	1054	278	14.5	GB
11.00R20	16	150/147	L	8.0	3075	830	3350	830	1085	293	15.5	GB
11.00R20	18	152/149	L	8.0	3250	930	3550	930	1085	293	15.5	GB
11.00R22	16	152/149	K	8.0	3250	830	3550	830	1135	293	14.5	TRA
11.00R22	18	154/151	K	8.0	3450	930	3750	930	1135	293	14.5	GB
12.00R20	18	154/151	L	8.5	3450	830	3750	830	1125	315	15.5	TRA
295/80R22.5	16	152/148	M	9.00	3150	850	3550	850	1044	298	16.0	ETRTO
295/80R22.5	16	150/147	M	9.00	3075	830	3350	830	1044	298	16.0	GB
305/75R24.5	16	154/149	L	9.00	3250	850	3750	850	1080	305	14.5	ETRTO
305/75R24.5	14	152/148	L	9.00	3150	800	3550	800	1080	305	14.5	ETRTO

- Special design for all position of buses and steer and trailer axle of trucks.
- Good side-wear resistance.
- High-speed performance.



LLF01

Radial Truck Tire (Long Haul)

Size	Ply Rating	Load Index	Speed Symbols	Rim	Max Load and Inflated Pressure				Overall Diameter (mm)	Section Width (mm)	Tread Depth (mm)	Operative Norm
					Dual		Single					
					kg	kPa	kg	kPa				
11R22.5	14	144/142	M	8.25	2650	720	2800	720	1054	279	14.5	TRA
11R22.5	16	146/143	M	8.25	2725	830	3000	830	1054	279	14.5	TRA
275/80R22.5	16	149/146	M	8.25	3000	850	3250	850	1012	276	14.5	ETRTO
295/80R22.5	16	152/148	M	9.00	3150	850	3550	850	1044	298	14.5	ETRTO
295/80R22.5	16	150/147	M	9.00	3075	830	3350	830	1044	298	14.5	GB
295/60R22.5	16	149/146	M	9.00	3000	900	3250	900	926	292	14.5	ETRTO
315/60R22.5	16	152/148	M	9.75	3150	900	3550	900	950	313	14.5	ETRTO

- Special for trucks of different tonnages which run on highway.
- Stable and safe when running on wet and slippery road.



LLF76

Radial Truck and Bus Tire (Long Haul)

Size	Ply Rating	Load Index	Speed Symbols	Rim	Max Load and Inflated Pressure				Overall Diameter (mm)	Section Width (mm)	Tread Depth (mm)	Operative Norm
					Dual		Single					
					kg	kPa	kg	kPa				
8R22.5	12	128/126	M	6.00	1700	760	1800	760	935	203	13.0	GB
8R22.5	14	130/128	M	6.00	1800	830	1900	830	935	203	13.0	GB

- Suitable for all position of buses and medium trucks running on the high-grade road.



F820

Radial Truck and Bus Tire (Long Haul)

Size	Ply Rating	Load Index	Speed Symbols	Rim	Max Load and Inflated Pressure				Overall Diameter (mm)	Section Width (mm)	Tread Depth (mm)	Operative Norm
					Dual		Single					
					kg	kPa	kg	kPa				
8.5R17.5	12	121/120	M	6.00	1400	625	1450	625	802	215	13.0	ETRTO
206/75R17.5	14	124/122	M	6.00	1500	750	1600	750	753	205	12.5	ETRTO
225/70R19.5	12	125/123	M	6.75	1550	660	1650	660	811	226	12.5	TRA
225/70R19.5	14	128/126	M	6.75	1700	760	1800	760	811	226	12.5	TRA
245/70R19.5	12	129/127	M	7.50	1750	660	1850	660	839	248	13.0	TRA
245/70R19.5	14	133/131	M	7.50	1950	760	2060	760	839	248	13.0	TRA
245/70R19.5	14	133/131	M	7.50	1950	750	2060	750	839	248	13.0	ETRTO
245/70R19.5	16	136/134	M	7.50	2120	825	2240	825	839	248	13.0	ETRTO
245/70R19.5	16	136/134	L	7.50	2120	825	2240	825	839	248	13.0	ETRTO
265/70R22.5	14	136/133	M	7.50	2060	700	2240	700	930	255	14.0	ETRTO
265/70R22.5	16	140/137	M	7.50	2300	830	2500	830	930	255	14.0	TRA
265/70R19.5	14	136/134	M	7.50	2120	725	2240	725	867	262	13.5	ETRTO
265/70R19.5	16	140/138	L	7.50	2360	775	2500	775	867	262	13.5	ETRTO
265/70R19.5	18	143/141	J	7.50	2575	850	2725	850	867	262	13.5	ETRTO
275/70R22.5	16	148/145	M	8.25	2900	900	3150	900	958	276	14.5	ETRTO
275/70R22.5	16	144/141	M	8.25	2575	830	2800	830	958	276	14.5	GB
285/70R19.5	16	144/142	M	8.25	2650	800	2800	800	895	283	14.0	-
285/70R19.5	18	146/144	M	8.25	2800	900	3000	900	895	283	14.0	ETRTO
285/70R19.5	18	150/147	J	8.25	3075	900	3350	900	895	283	14.0	-

- Suitable for all position of buses and the steer and trailer axle of trucks running on the highway.





LLF56+

Radial Truck and Bus Tire (Long Haul)

Size	Ply Rating	Load Index	Speed Symbols	Rim	Max Load and Inflated Pressure				Overall Diameter (mm)	Section Width (mm)	Tread Depth (mm)	Operative Norm
					Dual		Single					
					kg	kPa	kg	kPa				
9R22.5	12	133/131	M	6.75	1950	720	2060	720	974	229	13.5	TRA
9R22.5	14	136/134	M	6.75	2120	830	2240	830	974	229	13.5	TRA
10R22.5	14	141/139	M	7.50	2430	790	2575	790	1019	254	14.0	TRA
10R22.5	14	144/142	L	7.50	2650	850	2800	850	1020	254	14.0	ETRTC

■ Suitable for all position of light and medium trucks running on highway.



LLD01

Radial Truck Tire (Long Haul)

Size	Ply Rating	Load Index	Speed Symbols	Rim	Max Load and Inflated Pressure				Overall Diameter (mm)	Section Width (mm)	Tread Depth (mm)	Operative Norm
					Dual		Single					
					kg	kPa	kg	kPa				
11.00R20	16	150/147	K	8.00	3075	830	3350	830	1085	293	20.0	GB
11.00R20	18	152/149	K	8.00	3250	930	3550	930	1085	293	20.0	GB
11R22.5	14	144/142	L	8.25	2650	720	2800	720	1054	279	20.0	TRA
11R22.5	16	146/143	L	8.25	2725	830	3000	830	1054	279	20.0	TRA
11R22.5	16	148/145	L	8.25	2900	850	3150	850	1050	279	20.0	ETRTC
12.00R20	18	154/151	L	8.50	3450	830	3750	830	1125	315	20.0	TRA
12R22.5	16	152/148	L	9.00	3150	850	3550	850	1084	300	20.0	ETRTC
315/80R22.5	18	154/150	M	9.00	3350	825	3750	825	1076	312	19.5	ETRTC
315/80R22.5	20	156/150	L	9.00	3350	850	4000	850	1076	312	19.5	ETRTC

■ Suitable for trucks running with high speed on highway.

■ Good grip and high-speed performance.

■ Low fuel consumption.



D905

Radial Truck Tire (Long Haul)

Size	Ply Rating	Load Index	Speed Symbols	Rim	Max Load and Inflated Pressure				Overall Diameter (mm)	Section Width (mm)	Tread Depth (mm)	Operative Norm
					Dual		Single					
					kg	kPa	kg	kPa				
12.00R20	18	154/151	L	8.50	3450	830	3750	830	1125	315	20.0	TRA
12R22.5	16	152/148	L	9.00	3150	850	3550	850	1084	300	20.0	ETRTC
215/75R17.5	12	124/123	M	6.00	1550	675	1600	675	767	212	15.0	ETRTC
215/75R17.5	14	126/124	L/M	6.00	1600	700	1700	700	767	212	15.0	ETRTC
215/75R17.5	16	135/133	J/L	6.00	2060	850	2180	850	767	212	15.0	ETRTC
225/70R19.5	12	125/123	M	6.75	1550	660	1650	660	811	226	15.0	GB
225/70R19.5	14	128/126	M	6.75	1700	760	1800	760	811	226	15.0	GB
235/75R17.5	14	132/130	L/M	6.75	1900	775	2000	775	797	233	15.5	ETRTC
235/75R17.5	16	141/140	J	6.75	2500	850	2575	850	797	233	15.5	ETRTC
235/75R17.5	18	143/141	J	6.75	2575	875	2725	875	797	233	15.5	ETRTC
245/70R17.5	18	143/141	L	7.50	2575	875	2725	875	789	248	18.0	ETRTC
245/70R19.5	14	141/140	L	7.50	2600	850	2575	850	839	248	16.5	ETRTC
275/70R22.5	16	148/145	M	8.25	2900	900	3150	900	958	276	17.5	ETRTC
275/70R22.5	16	144/141	M	8.25	2575	830	2800	830	958	276	17.5	GB
285/70R19.5	16	140/137	M	8.25	2300	725	2500	725	895	283	16.0	ETRTC
285/70R19.5	18	146/144	M	8.25	2800	900	3000	900	895	283	16.0	ETRTC
285/70R19.5	18	150/148	J	8.25	3150	900	3350	900	895	283	16.0	ETRTC
295/80R22.5	16	152/148	M	9.00	3150	850	3550	850	1044	298	17.5	ETRTC
295/80R22.5	16	150/147	M	9.00	3075	830	3350	830	1044	298	17.5	GB
315/70R22.5	14	152/148	M	9.00	3150	850	3550	850	1014	312	17.5	ETRTC
315/70R22.5	16	154/150	M	9.00	3350	900	3750	900	1014	312	17.5	ETRTC

■ Typical block pattern design suitable for drive axle of trucks running on highway.

■ Good braking and grip on wet road.





D900
Radial Truck Tire (Long Haul)

Size	Ply Rating	Load Index	Speed Symbols	Rim	Max Load and Inflated Pressure				Overall Diameter (mm)	Section Width (mm)	Tread Depth (mm)	Operative Norm
					Dual		Single					
					kg	kPa	kg	kPa				
10.00R20	16	146/143	L	7.5	2725	830	3000	830	1054	278	17.5	TRA
10.00R20	18	149/146	K	7.5	3000	930	3250	930	1054	278	17.5	GB
11.00R20	16	150/147	L	8.0	3075	830	3350	830	1085	293	17.5	GB
11.00R20	18	152/149	L	8.0	3250	930	3550	930	1085	293	17.5	GB

- Suitable for drive axle of trucks running on highway.
- Good braking and grip on wet road.



LLD37
Radial Truck Tire (Long Haul)

Size	Ply Rating	Load Index	Speed Symbols	Rim	Max Load and Inflated Pressure				Overall Diameter (mm)	Section Width (mm)	Tread Depth (mm)	Operative Norm
					Dual		Single					
					kg	kPa	kg	kPa				
10.00R20	16	146/143	K	7.50	2725	830	3000	830	1054	278	20.0	GB
10.00R20	18	149/146	K	7.50	3000	930	3250	930	1054	278	21.0	GB
11R22.5	14	144/142	M	8.25	2650	720	2800	720	1054	279	22.0	TRA
11R22.5	16	146/143	M	8.25	2725	830	3000	830	1054	279	22.0	TRA
11R22.5	16	148/145	L	8.25	2900	850	3150	850	1050	279	22.0	ETRTO
11R24.5	14	146/143	M	8.25	2725	720	3000	720	1104	279	22.0	TRA
11R24.5	16	149/146	M	8.25	3000	830	3250	830	1104	279	22.0	TRA
265/70R19.5	18	143/141	J	7.50	2575	850	2725	850	867	262	16.0	ETRTO
285/75R24.5	14	144/141	M	8.25	2575	760	2800	760	1050	283	22.0	TRA
285/75R24.5	16	147/144	M	8.25	2800	830	3075	830	1050	283	22.0	TRA
295/75R22.5	14	144/141	M	9.00	2575	760	2800	760	1014	298	22.0	TRA
295/75R22.5	16	146/143	M	9.00	2725	830	3000	830	1014	298	22.0	TRA

- Suitable for the drive axle of the trucks running on highway.
- Good braking and grip on wet road.
- Long life.



LLD27
Radial Truck Tire (Long Haul)

Size	Ply Rating	Load Index	Speed Symbols	Rim	Max Load and Inflated Pressure				Overall Diameter (mm)	Section Width (mm)	Tread Depth (mm)	Operative Norm
					Dual		Single					
					kg	kPa	kg	kPa				
11R22.5	14	144/142	M	8.25	2650	720	2800	720	1054	279	16.5	TRA
11R22.5	16	146/143	M	8.25	2725	830	3000	830	1054	279	16.5	TRA
11R22.5	16	148/145	L	8.25	2900	850	3150	850	1050	279	16.5	ETRTO
12R22.5	16	152/148	L	9.00	3150	850	3550	850	1084	300	17.5	ETRTO

- Suitable for the drive axle of the trucks running on highway.
- Good braking and grip on wet road.



D930
Radial Truck Tire (Long Haul)

Size	Ply Rating	Load Index	Speed Symbols	Rim	Max Load and Inflated Pressure				Overall Diameter (mm)	Section Width (mm)	Tread Depth (mm)	Operative Norm
					Dual		Single					
					kg	kPa	kg	kPa				
11.00R22	16	152/149	K	8.00	3250	830	3550	830	1135	293	19.5	TRA
305/75R24.5	14	152/148	L	9.00	3150	800	3550	800	1080	305	19.5	ETRTO
305/75R24.5	16	154/149	L	9.00	3250	850	3750	850	1080	305	19.5	ETRTO

- Drive axle for highway.
- Deep and rigid block design for good traction.





D928

Radial Truck Tire (Long Haul)

Size	Ply Rating	Load Index	Speed Symbols	Rim	Max Load and Inflated Pressure				Overall Diameter (mm)	Section Width (mm)	Tread Depth (mm)	Operative Norm
					Dual		Single					
					kg	kPa	kg	kPa				
9.00R20	16	144/142	K	7.0	2650	900	2800	900	1019	259	17.5	GB
10.00R20	16	146/143	L	7.5	2725	830	3000	830	1054	278	20.0	TRA
10.00R20	18	149/146	K	7.5	3000	930	3250	930	1054	278	20.0	GB
11R22.5	14	144/142	L	8.25	2650	720	2800	720	1054	279	20.5	TRA
11R22.5	16	146/143	L	8.25	2725	830	3000	830	1054	279	20.5	TRA
11R22.5	16	148/145	L	8.25	2900	850	3150	850	1050	279	20.5	ETRTO
11R24.5	14	146/143	L	8.25	2725	720	3000	720	1104	279	20.5	TRA
11R24.5	16	149/146	L	8.25	3000	830	3250	830	1104	279	20.5	TRA
285/75R24.5	14	144/141	M	8.25	2575	760	2800	760	1050	283	20.5	TRA
285/75R24.5	16	147/144	M	8.25	2800	830	3075	830	1050	283	20.5	TRA
295/75R22.5	14	144/141	M	9.00	2575	760	2800	760	1014	298	20.5	TRA
295/75R22.5	16	146/143	M	9.00	2725	830	3000	830	1014	298	20.5	TRA

- Typical block pattern design suitable for drive axle of trucks running on highway.
- Good braking and grip on the road.



D915

Radial Truck Tire (Long Haul)

Size	Ply Rating	Load Index	Speed Symbols	Rim	Max Load and Inflated Pressure				Overall Diameter (mm)	Section Width (mm)	Tread Depth (mm)	Operative Norm
					Dual		Single					
					kg	kPa	kg	kPa				
10.00R20	16	146/143	L	7.5	2725	830	3000	830	1054	278	20	GB
10.00R20	18	149/146	K	7.5	3000	930	3250	930	1054	278	20	GB
295/60R22.5	16	149/146	M	9.00	3000	900	3250	900	926	292	17.5	ETRTO
315/60R22.5	16	152/148	M	9.75	3150	900	3550	900	950	313	19.5	ETRTO

- Typical block pattern design suitable for drive axle of truck running on highway.
- Good handling and driving.
- Long life.



T810

Radial Truck Tire and Bus Tire (Long Haul)

Size	Ply Rating	Load Index	Speed Symbols	Rim	Max Load and Inflated Pressure				Overall Diameter (mm)	Section Width (mm)	Tread Depth (mm)	Operative Norm
					Dual		Single					
					kg	kPa	kg	kPa				
11R22.5	14	144/142	M	8.25	2650	720	2800	720	1054	279	10.75	TRA
11R22.5	16	146/143	M	8.25	2725	830	3000	830	1054	279	10.75	TRA
11R22.5	16	148/145	L	8.25	2900	850	3150	850	1050	279	10.75	ETRTO
11R24.5	14	146/143	M	8.25	2725	720	3000	720	1104	279	10.75	TRA
11R24.5	16	149/146	M	8.25	3000	830	3250	830	1104	279	10.75	TRA
255/70R22.5	16	140/137	M	7.50	2300	830	2500	830	930	255	10.75	TRA
285/75R24.5	14	144/141	M	8.25	2575	760	2800	760	1050	283	10.75	TRA
285/75R24.5	16	147/144	M	8.25	2800	830	3075	830	1050	283	10.75	TRA
295/75R22.5	14	144/141	M	9.00	2575	760	2800	760	1014	298	10.75	TRA
295/75R22.5	16	146/143	M	9.00	2725	830	3000	830	1014	298	10.75	TRA

- Suitable for all position of the buses and trailer axle of the trucks running on highway.



C600

Radial Truck and Bus Tire (Long Haul)

Size	Ply Rating	Load Index	Speed Symbols	Rim	Max Load and Inflated Pressure				Overall Diameter (mm)	Section Width (mm)	Tread Depth (mm)	Operative Norm
					Dual		Single					
					kg	kPa	kg	kPa				
9R22.5	14	136/134	M	6.75	2120	830	2240	830	974	229	15	TRA
10R22.5	14	144/142	L	7.50	2650	850	2800	850	1020	254	15	ETRTO
11R22.5	14	144/142	M	8.25	2650	720	2800	720	1054	279	16	TRA
11R22.5	16	146/143	L	8.25	2725	830	3000	830	1054	279	16	TRA
11R22.5	16	148/145	L	8.25	2900	850	3150	850	1050	279	16	ETRTO
12R22.5	16	152/148	L	9.00	3150	850	3550	850	1084	300	16	ETRTO
295/80R22.5	16	152/148	M	9.00	3150	850	3550	850	1044	298	16	ETRTO
295/80R22.5	16	150/147	M	9.00	3075	830	3350	830	1044	298	16	GB

- High-speed performance.
- Low fuel consumption.





LAL815

Radial Truck Tire (Medium Haul)

Size	Ply Rating	Load Index	Speed Symbols	Rim	Max Load and Inflated Pressure				Overall Diameter (mm)	Section Width (mm)	Tread Depth (mm)	Operative Norm
					Dual		Single					
					kg	kPa	kg	kPa				
225/80R17.5	14	123/122	L	6.75	1600	700	1550	700	805	226	15.0	JATMA

- Good driving and wear resistance.
- Low noise and comfortable performance.
- "Z" pattern design, provide good wet grip and good handing.



SmartWay™

LLF02e+

Radial Truck Tire (Long Haul)

Size	Ply Rating	Load Index	Speed Symbols	Rim	Max Load and Inflated Pressure				Overall Diameter (mm)	Section Width (mm)	Tread Depth (mm)	Operative Norm
					Dual		Single					
					kg	kPa	kg	kPa				
315/80R22.5	18	154/151	M	9.0J	3450	830	3750	830	1076	312	14.5	TRA
315/80R22.5	20	157/154	L	9.0J	3750	900	4125	900	1076	312	14.5	TRA

- Special for trucks of different tonnages which run on highway.
- Stable and safe when run on wet and slippery road.
- Certified by U.S.A SmartWay.



SmartWay™

F816e+

Radial Truck and Bus Tire (Long Haul)

Size	Ply Rating	Load Index	Speed Symbols	Rim	Max Load and Inflated Pressure				Overall Diameter (mm)	Section Width (mm)	Tread Depth (mm)	Operative Norm
					Dual		Single					
					kg	kPa	kg	kPa				
11R22.5	14	144/142	M	8.25	2650	720	2800	720	1054	279	14.5	TRA
11R22.5	16	146/143	M	8.25	2725	830	3000	830	1054	279	14.5	TRA
11R24.5	14	146/143	M	8.25	2725	720	3000	720	1104	279	14.5	TRA
11R24.5	16	149/146	M	8.25	3000	830	3250	830	1104	279	14.5	TRA
285/75R24.5	14	144/141	M	8.25	2575	760	2800	760	1050	283	14.5	TRA
285/75R24.5	16	147/144	M	8.25	2800	830	3075	830	1050	283	14.5	TRA
295/75R22.5	14	144/141	M	9.00	2575	760	2800	760	1014	298	14.5	TRA
295/75R22.5	16	146/143	M	9.00	2725	830	3000	830	1014	298	14.5	TRA

- Good handling.
- Low rolling resistance.
- Certified by U.S.A SmartWay.



SmartWay™

LLF16e+

Radial Truck and Bus Tire (Long Haul)

Size	Ply Rating	Load Index	Speed Symbols	Rim	Max Load and Inflated Pressure				Overall Diameter (mm)	Section Width (mm)	Tread Depth (mm)	Operative Norm
					Dual		Single					
					kg	kPa	kg	kPa				
11R22.5	14	144/142	M	8.25	2650	720	2800	720	1054	279	14.5	TRA
11R22.5	16	146/143	M	8.25	2725	830	3000	830	1054	279	14.5	TRA
11R24.5	14	146/143	M	8.25	2725	720	3000	720	1104	279	14.5	TRA
11R24.5	16	149/146	M	8.25	3000	830	3250	830	1104	279	14.5	TRA
285/75R24.5	14	144/141	M	8.25	2575	760	2800	760	1050	283	14.5	TRA
285/75R24.5	16	147/144	M	8.25	2800	830	3075	830	1050	283	14.5	TRA
295/75R22.5	14	144/141	M	9.00	2575	760	2800	760	1014	298	14.5	TRA
295/75R22.5	16	146/143	M	9.00	2725	830	3000	830	1014	298	14.5	TRA

- Good handling.
- Low rolling resistance.
- Certified by U.S.A SmartWay.





SmartWay™
LLD37e+
Radial Truck Tire (Long Haul)

Size	Ply Rating	Load Index	Speed Symbols	Rim	Max Load and Inflated Pressure				Overall Diameter (mm)	Section Width (mm)	Tread Depth (mm)	Operative Norm
					Dual		Single					
					kg	kPa	kg	kPa				
11R22.5	14	144/142	M	8.25	2650	720	2800	720	1054	279	22.0	TRA
11R22.5	16	146/143	M	8.25	2725	830	3000	830	1054	279	22.0	TRA
11R24.5	14	146/143	M	8.25	2725	720	3000	720	1104	279	22.0	TRA
11R24.5	16	149/146	M	8.25	3000	830	3250	830	1104	279	22.0	TRA
285/75R24.5	14	144/141	M	8.25	2575	760	2800	760	1050	283	22.0	TRA
285/75R24.5	16	147/144	M	8.25	2800	830	3075	830	1050	283	22.0	TRA
295/75R22.5	14	144/141	M	9.00	2575	760	2800	760	1014	298	22.0	TRA
295/75R22.5	16	146/143	M	9.00	2725	830	3000	830	1014	298	22.0	TRA

- Suitable for the drive axle of the trucks running on highway.
- Good braking and grip on wet road.
- Long life.
- Certified by U.S.A SmartWay.



SmartWay™
T810e+
Radial Truck Tire and Bus Tire (Long Haul)

Size	Ply Rating	Load Index	Speed Symbols	Rim	Max Load and Inflated Pressure				Overall Diameter (mm)	Section Width (mm)	Tread Depth (mm)	Operative Norm
					Dual		Single					
					kg	kPa	kg	kPa				
11R22.5	14	144/142	M	8.25	2650	720	2800	720	1054	279	10.75	TRA
11R22.5	16	146/143	M	8.25	2725	830	3000	830	1054	279	10.75	TRA
11R24.5	14	146/143	M	8.25	2725	720	3000	720	1104	279	10.75	TRA
11R24.5	16	149/146	M	8.25	3000	830	3250	830	1104	279	10.75	TRA
295/75R22.5	14	144/141	M	9.00	2575	760	2800	760	1014	298	10.75	TRA
295/75R22.5	16	146/143	M	9.00	2725	830	3000	830	1014	298	10.75	TRA

- Suitable for all position of the buses and trailer axle of the trucks running on highway.



SmartWay™
LLA08e+
Radial Truck Tire (Medium Haul)

Size	Ply Rating	Load Index	Speed Symbols	Rim	Max Load and Inflated Pressure				Overall Diameter (mm)	Section Width (mm)	Tread Depth (mm)	Operative Norm
					Dual		Single					
					kg	kPa	kg	kPa				
11R22.5	16	146/143	K	8.25	2725	830	3000	830	1054	279	15.5	TRA

- Typical combined pattern.
- Suitable for trucks of different tonnages which run on highway and normal road.
- Good handling.
- Certified by U.S.A SmartWay.



SmartWay™
LLA18e+
Radial Truck Tire (Long Haul)

Size	Ply Rating	Load Index	Speed Symbols	Rim	Max Load and Inflated Pressure				Overall Diameter (mm)	Section Width (mm)	Tread Depth (mm)	Operative Norm
					Dual		Single					
					kg	kPa	kg	kPa				
385/65R22.5	18	158	K	11.75	/	/	4250	830	1072	389	16.5	TRA

- Suitable for trucks of different tonnages which run on highway.
- Certified by U.S.A SmartWay.



SmartWay™
LAL800e+
Radial Truck Tire on Highway (Long Haul)

Size	Ply Rating	Load Index	Speed Symbols	Rim	Max Load and Inflated Pressure				Overall Diameter (mm)	Section Width (mm)	Tread Depth (mm)	Operative Norm
					Dual		Single					
					kg	kPa	kg	kPa				
11R22.5	14	144/142	L	8.25	2650	720	2800	720	1054	279	16.0	TRA
11R22.5	16	146/143	M	8.25	2725	830	3000	830	1054	279	16.0	TRA

- Good handling and driving.
- Long life.
- Certified by U.S.A SmartWay.





SmartWay™
LTE821 **NEW**
Radial Truck Tire for Highway (Long Haul)

Size	Ply Rating	Load Index	Speed Symbols	Rim	Max Load and Inflated Pressure				Overall Diameter (mm)	Section Width (mm)	Tread Depth (mm)	Operative Norm
					Dual		Single					
					kg	kPa	kg	kPa				
11R22.5	14	144/142	M	8.25	2650	720	2800	720	1054	279	9.5	TRA
11R22.5	16	146/143	M	8.25	2725	830	3000	830	1054	279	9.5	TRA
11R24.5	14	146/143	M	8.25	2725	720	3000	720	1104	279	9.5	TRA
11R24.5	16	149/146	M	8.25	3000	830	3250	830	1104	279	9.5	TRA
285/75R24.5	14	144/141	M	8.25	2575	760	2800	760	1050	283	9.5	TRA
285/75R24.5	16	147/144	M	8.25	2800	830	3075	830	1050	283	9.5	TRA
295/75R22.5	14	144/141	M	9.00	2575	760	2800	760	1014	298	10.0	TRA
295/75R22.5	16	146/143	M	9.00	2725	830	3000	830	1014	298	10.0	TRA

- Excellent straight running performance.
- Sipes in shoulder offer low noise and strong heat dissipation.
- Low rolling resistance.



SmartWay™
LFE823 **NEW**
Radial Truck Tire for Highway (Long Haul)

Size	Ply Rating	Load Index	Speed Symbols	Rim	Max Load and Inflated Pressure				Overall Diameter (mm)	Section Width (mm)	Tread Depth (mm)	Operative Norm
					Dual		Single					
					kg	kPa	kg	kPa				
10.00R15TR	14	137/135	L	7.5C	2180	720	2300	720	927	278	13.0	TRA
10R17.5	16	134/132	L	7.5C	2000	800	2120	800	858	254	13.0	ETRTO
11R17.5	14	137/135	L	8.25	2180	720	2300	720	279	927	14.5	TRA
11R22.5	14	144/142	M	8.25	2650	720	2800	720	1054	279	14.5	TRA
11R22.5	16	146/143	M	8.25	2725	830	3000	830	1054	279	14.5	TRA
11R24.5	14	146/143	M	8.25	2725	720	3000	720	1104	279	14.5	TRA
11R24.5	16	149/146	M	8.25	3000	830	3250	830	1104	279	14.5	TRA
255/70R22.5	14	138/134	M	7.5C	2120	760	2360	760	930	255	14.0	TRA
255/70R22.5	16	140/137	M	7.5C	2300	830	2500	830	930	255	14.0	TRA
285/75R24.5	14	144/141	M	8.25	2575	760	2800	760	1050	283	14.5	TRA
285/75R24.5	16	147/144	M	8.25	2800	830	3075	830	1050	283	14.5	TRA
295/75R22.5	14	144/141	M	9.0C	2575	760	2800	760	1014	298	14.5	TRA
295/75R22.5	16	146/143	M	9.0C	2725	830	3000	830	1014	298	14.5	TRA

- S-shaped groove bottom reduces stone retention.
- Good handling and high-speed performance.
- Low rolling resistance.



LFE805
Radial Truck Tire for Highway (Long Haul)

Size	Ply Rating	Load Index	Speed Symbols	Rim	Max Load and Inflated Pressure				Overall Diameter (mm)	Section Width (mm)	Tread Depth (mm)	Operative Norm
					Dual		Single					
					kg	kPa	kg	kPa				
295/80R22.5	16	152/148	M	9.00	3150	850	3550	850	1044	298	15.0	ETRTO
295/80R22.5	16	150/147	M	9.00	3075	830	3350	830	1044	298	15.0	GB
315/80R22.5	18	154/151	M	9.00	3450	830	3750	830	1076	312	15.0	GB
315/80R22.5	18	154/150	M	9.00	3350	825	3750	825	1076	312	15.0	ETRTO
315/80R22.5	20	156/150	L	9.00	3350	850	4000	850	1076	312	15.0	ETRTO

- S-shaped groove bottom reduces stone retention.
- Good handling and high-speed performance.
- Low rolling resistance.



LDE803
Radial Truck Tire (Long Haul)

Size	Ply Rating	Load Index	Speed Symbols	Rim	Max Load and Inflated Pressure				Overall Diameter (mm)	Section Width (mm)	Tread Depth (mm)	Operative Norm
					Dual		Single					
					kg	kPa	kg	kPa				
295/80R22.5	16	152/148	M	9.00	3150	850	3550	850	1044	298	20.0	ETRTO
295/80R22.5	16	150/147	M	9.00	3075	830	3350	830	1044	298	20.0	GB
315/80R22.5	18	154/151	M	9.00	3450	830	3750	830	1076	312	18.5	GB
315/80R22.5	18	154/150	M	9.00	3350	825	3750	825	1076	312	18.5	ETRTO
315/80R22.5	20	156/150	L	9.00	3350	850	4000	850	1076	312	18.5	ETRTO

- Suitable for trucks running with high speed on highway.
- Low fuel consumption.
- Good braking and grip on wet road.





Technological Highlights

NO.1



- ▶ Add the tread width and groove depth, increasing the wearing rubber by 10%.

NO.2



- ▶ The newly developed compound for wear resistance contains the famous carbon black, CARBOT, imported from the USA. The road test shows that the road haul can be increased by 10%.

NO.3



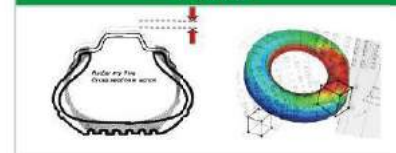
- ▶ Increase antioxidants in sidewall compound to reduce sidewall aging.

NO.4



- ▶ Reduce premature irregular wear, optimize wear-rate in the arc of crown area and excellent ground contact, increase the travel distance and mileage by 10%.

NO.5



- ▶ Optimize contour for decreasing deformation and heat to increase tire life.

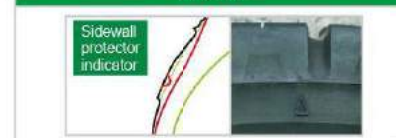
NO.6



- ▶ Tire strength is increased by 30%, and the resistance to the carcass fatigue is increased by more than 50%.

The first company using ST/UT Steel cord in China

NO.7



- ▶ New contour design. Thicker sidewall fights curb damage, and retread indicator helps to reduce belt damage when retreading.

NO.8



- ▶ At the rush hour, tire load is heavy, bead cracks are liable to appear.
- ▶ Increase fiber layer in bead area.

Bus & Coach Tire

- 1. Low Cost Per Kilometer.
- 2. Irregular Wear Resistance.
- 3. Retreadability.



LAU603

LAU605

U801

LAU802



LAU603



Radial truck and bus tire(Long Haul)

Size	Ply Rating	Load Index	Speed Symbols	Rim	Max Load and Inflated Pressure				Overall Diameter (mm)	Section Width (mm)	Tread Depth (mm)	Operative Norm
					Dual		Single					
					kg	kPa	kg	kPa				
9R22.5	14	136/134	M	6.75	2120	830	2240	830	974	229	16.0	TRA
10R22.5	14	141/139	L	7.50	2430	790	2575	790	1019	254	17.0	TRA
11R22.5	14	144/142	M	8.25	2650	720	2800	720	1054	279	16.0	TRA
11R22.5	16	146/143	M	8.25	2725	830	3000	830	1054	279	16.0	TRA
11R22.5	16	148/145	M	8.25	2900	850	3150	850	1050	279	16.0	ETRTO
12R22.5	16	150/147	M	9.00	3075	830	3350	830	1085	300	17.0	GB
12R22.5	16	152/148	M	9.00	3150	850	3550	850	1084	300	17.0	ETRTO
275/70R22.5	16	148/145	M	8.25	2900	900	3150	900	958	276	16.0	ETRTO
275/70R22.5	16	144/141	M	8.25	2575	830	2800	830	958	276	16.0	GB
295/80R22.5	16	152/148	M	9.00	3150	850	3550	850	1044	298	17.0	ETRTO
295/80R22.5	16	150/147	M	9.00	3075	830	3350	830	1044	298	17.0	GB
295/80R22.5	18	152/149	M	9.00	3250	900	3550	900	1044	298	17.0	GB

- Suitable for drive and steer axle of trucks riding on highway.
- Long life.
- Good grip performance.
- low eccentric wear.



LAU605



Radial Truck and Bus Tire(Long Haul)

Size	Ply Rating	Load Index	Speed Symbols	Rim	Max Load and Inflated Pressure				Overall Diameter (mm)	Section Width (mm)	Tread Depth (mm)	Operative Norm
					Dual		Single					
					kg	kPa	kg	kPa				
6.00R16LT	8	97/92	L	4.5CE	630	460	730	460	705	170	10.5	GB
6.50R14LT	8	95/90	L	4 1/2J	600	450	690	450	672	168	10.0	GB
6.50R16LT	10	107/102	M	5.5CF	850	560	975	560	750	185	12.0	GB
6.50R16LT	12	110/105	L	5.5CF	925	670	1060	670	750	185	12.0	GB
7.00R16LT	12	115/110	M	5.5CF	1060	670	1215	670	775	200	13.0	GB
7.00R16LT	14	118/114	L	5.5CF	1180	770	1320	770	775	200	13.0	GB
7.50R16LT	8	110/105	L	6.0CG	925	460	1060	460	780	215	13.0	GB
7.50R16LT	10	115/110	L	6.0CG	1060	560	1215	560	780	215	13.0	GB
7.50R16LT	12	120/116	M	6.0CG	1250	670	1400	670	805	215	14.0	GB
7.50R16LT	14	122/118	M	6.0CG	1320	770	1500	770	805	215	15.0	GB
8.25R16LT	16	128/124	L	6.5CH	1600	770	1800	770	855	235	14.0	GB
8R22.5	14	130/128	M	6.0J	1800	830	1900	830	935	203	14.0	GB
215/75R17.5	14	126/124	M	6.0J	1600	700	1700	700	767	212	16.0	ETRTO
215/75R17.5	16	135/133	J	6.0J	2060	850	2180	850	767	212	16.0	ETRTO
215/75R17.5	14	125/122	M	6.0J	1500	760	1650	760	767	211	16.0	GB
215/75R17.5	16	127/124	J	6.0J	1600	830	1750	830	767	211	16.0	GB
225/80R17.5	14	123/122	M	6.75	1500	700	1550	700	802	232	16.0	JATMA
235/75R17.5	14	132/130	M	6.75	1900	775	2000	775	797	233	14.5	ETRTO
235/75R17.5	16	141/140	J	6.75	2500	850	2575	850	797	233	14.5	ETRTO
245/70R17.5	18	143/141	J	7.5J	2575	875	2725	875	789	248	14.5	ETRTO

- Extra wide tread design for high mileage and even wear.
- Zig-zag grooves for excellent handling.
- Optimize structure design.





U801
Radial Bus Tire



Size	Ply Rating	Load Index	Speed Symbols	Rim	Max Load and Inflated Pressure				Overall Diameter (mm)	Section Width (mm)	Tread Depth (mm)	Operative Norm
					Dual		Single					
					kg	kPa	kg	kPa				
11R22.5	14	144/142	J	8.25	2650	720	2800	720	1054	279	20.0	TRA
11R22.5	16	146/143	J	8.25	2725	830	3000	830	1054	279	20.0	TRA
11R22.5	16	148/145	J	8.25	2900	850	3150	850	1050	279	20.0	ETRTO
275/70R22.5	16	148/145 (152/148)	J(E)	8.25	2900	900	3150	900	958	276	19.5	ETRTO
275/70R22.5	16	144/141	J	8.25	2575	830	2800	830	958	276	19.5	GB
295/80R22.5	16	150/147	J	9.00	3075	830	3350	830	1044	298	20.0	GB
295/80R22.5	18	152/149	J	9.00	3250	900	3550	900	1044	298	20.0	GB
295/80R22.5	16	152/148 (154/150)	J(E)	9.00	3150	900	3550	900	1044	298	20.0	ETRTO
305/70R22.5	16	152/148 (154/150)	J(E)	9.00	3150	900	3550	900	1000	305	20.0	ETRTO

- High safety and long life.
- Good wet traction.
- Typical used for urban bus.



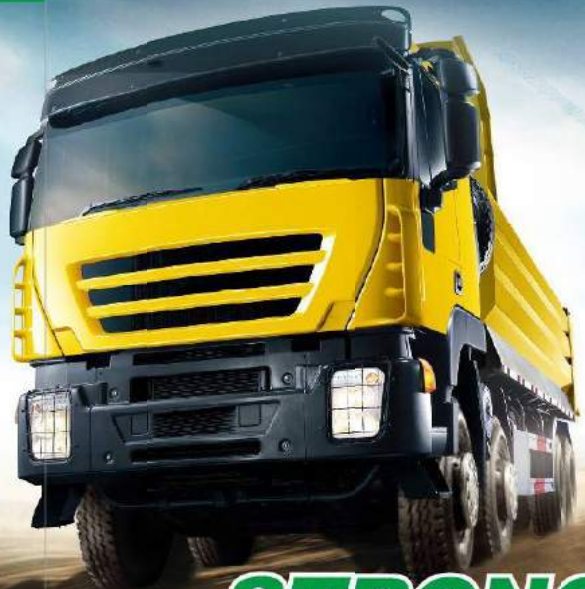
LAU802
Radial Bus Tire



Size	Ply Rating	Load Index	Speed Symbols	Rim	Max Load and Inflated Pressure				Overall Diameter (mm)	Section Width (mm)	Tread Depth (mm)	Operative Norm
					Dual		Single					
					kg	kPa	kg	kPa				
11R22.5	14	144/142	F	8.25	2650	720	2800	720	1054	279	20.0	TRA
11R22.5	16	146/143	F	8.25	2725	830	3000	830	1054	279	20.0	TRA
11R22.5	16	148/145	J	8.25	2900	850	3150	850	1050	279	20.0	ETRTO
275/70R22.5	16	148/145 (152/148)	J(E)	8.25	2900	900	3150	900	958	276	19.5	ETRTO
275/70R22.5	16	144/141	J	8.25	2575	830	2800	830	958	276	19.5	GB
295/80R22.5	16	150/147	J	9.00	3075	830	3350	830	1044	298	20.0	GB
295/80R22.5	18	152/149	J	9.00	3250	900	3550	900	1044	298	20.0	GB
295/80R22.5	16	152/148 (154/150)	J(E)	9.00	3150	900	3550	900	1044	298	20.0	ETRTO
305/70R22.5	16	152/148 (154/150)	J(E)	9.00	3150	900	3550	900	1000	305	20.0	ETRTO

- Enhanced sidewall ensures high safety.
- Long service life.
- Typical used for urban bus.





New

STRONG-MAX

Heavy Truck Tire

- 1. Heavy Load.
- 2. High Traction.
- 3. Stone Ejectors.



LAR919

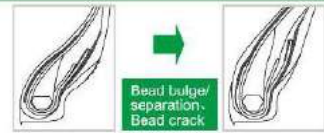
LDR929

LDR939

LDR978

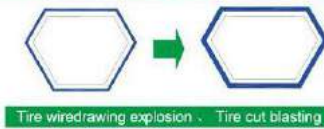
Technological Highlights

NO.1



▶ With Application of patented technologies , the durability of the bead is two times of the original.

NO.2



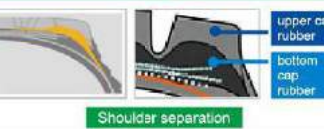
▶ With application of bead seamless winding technology, tire wiredrawing explosion and tire cut blasting are reduced.

NO.3



▶ With application of patented belt technologies ,tire strength is increased by 20%.

NO.4



▶ The ratio of low heat generation base rubber has increased by 10% to improve shoulder durability and puncture resistance.

NO.5



▶ With application of HT steel cord and no welding spots steels , carcass strength is increased by 40%.

NO.6



▶ Improve rubber adhesive properties during the later life of tire.



D927

Radial Truck Tire (Short Haul)



Size	Ply Rating	Load Index	Speed Symbols	Rim	Max Load and Inflated Pressure				Overall Diameter (mm)	Section Width (mm)	Tread Depth (mm)	Operative Norm
					Dual		Single					
					kg	kPa	kg	kPa				
9.00R20	16	144/142	K	7.0	2650	900	2800	900	1019	259	18.5	GB
10.00R20	18	149/146	K	7.5	3000	930	3250	930	1054	278	19.5	GB
11.00R20	18	152/149	K	8.0	3250	930	3550	930	1085	293	19.5	GB
12.00R20	20	156/153	K	8.5	3650	900	4000	900	1125	315	19.5	GB

- Transverse groove can provide powerful drive.
- Reinforcing belt layer and beac structural design for durability of the tire's load.



LAR919

Radial Truck Tire (Medium Haul)



Size	Ply Rating	Load Index	Speed Symbols	Rim	Max Load and Inflated Pressure				Overall Diameter (mm)	Section Width (mm)	Tread Depth (mm)	Operative Norm
					Dual		Single					
					kg	kPa	kg	kPa				
10.00R20	18	149/146	K	7.5	3000	930	3250	930	1054	278	16.0	GB
11.00R20	18	152/149	K	8.0	3250	930	3550	930	1085	293	16.0	GB
12.00R20	18	154/151	K	8.5	3450	830	3750	830	1125	315	16.0	GB
12.00R20	20	156/153	K	8.5	3650	900	4000	900	1125	315	16.0	GB
13R22.5	18	154/151	K	9.75	3450	830	3750	830	1124	320	15.0	GB

- Pattern block design reduce shoulder heat.
- Wide running surface and higher saturation design improve the wear mileage.
- Powerful traction, grip and climbing performance.



LDR929

Radial Truck Tire (Medium Haul)



Size	Ply Rating	Load Index	Speed Symbols	Rim	Max Load and Inflated Pressure				Overall Diameter (mm)	Section Width (mm)	Tread Depth (mm)	Operative Norm
					Dual		Single					
					kg	kPa	kg	kPa				
11.00R20	18	152/149	K	8.0	3250	930	3550	930	1085	293	18.0	GB
12.00R20	18	154/151	K	8.5	3450	830	3750	830	1125	315	18.0	GB
12.00R20	20	156/153	K	8.5	3650	900	4000	900	1125	315	18.0	GB

- Transverse pattern block design reduces shoulder heat.
- Wide running surface and higher saturation design improve the wear mileage.
- Powerful traction, grip and climbing ability.



LDR939

Radial Truck Tire (Medium Haul)



Size	Ply Rating	Load Index	Speed Symbols	Standard Rim	Max Load and Inflated Pressure				Overall Diameter (mm)	Section Width (mm)	Tread Depth (mm)	Operative Norm
					Dual		Single					
					kg	kPa	kg	kPa				
11.00R20	18	152/149	K	8.0	3250	930	3550	930	1085	293	21.5	GB
12.00R20	18	154/151	K	8.5	3450	830	3750	830	1136	315	21.5	GB
12.00R20	20	156/153	K	8.5	3650	900	4000	900	1136	315	21.5	GB

- Good traction.
- Chip, cut and abrasion resistance tread compound.
- Deep tread depth increases mileage and service life.



LDR978

Radial Truck Tire (Medium Haul)



Size	Ply Rating	Load Index	Speed Symbols	Rim	Max Load and Inflated Pressure				Overall Diameter (mm)	Section Width (mm)	Tread Depth (mm)	Operative Norm
					Dual		Single					
					kg	kPa	kg	kPa				
10.00R20	18	149/146	J	7.5	3000	930	3250	930	1054	278	18.0	GB
11.00R20	18	152/149	K	8.0	3250	930	3550	930	1085	293	18.0	GB
12.00R20	18	154/151	K	8.5	3450	830	3750	830	1125	315	18.0	GB

- Good traction.
- Chip, cut and abrasion resistance tread compound.
- Deep tread depth increases mileage and service life.





LDO906
Radial Truck Tire (Short Haul)

Size	Ply Rating	Load Index	Speed Symbols	Rim	Max Load and Inflated Pressure				Overall Diameter (mm)	Section Width (mm)	Tread Depth (mm)	Operative Norm
					Dual		Single					
					kg	kPa	kg	kPa				
11.00R20	18PR	152/149	F	8.0	3250	930	3550	930	1085	293	17.5	TRA

- Suitable for on/off road conditions.
- High traction and good self-cleaning ability.
- Enhanced bead improves loading capability.



LLD09
Radial Truck Tire (Short Haul)

Size	Ply Rating	Load Index	Speed Symbols	Rim	Max Load and Inflated Pressure				Overall Diameter (mm)	Section Width (mm)	Tread Depth (mm)	Operative Norm
					Dual		Single					
					kg	kPa	kg	kPa				
7.50R16LT	12	120/116	M	6.00G	1250	670	1400	670	805	215	13.5	GB
7.50R16LT	14	122/118	M	6.00G	1320	770	1500	770	805	215	13.5	GB
8.25R16LT	12	123/119	L	6.50H	1360	560	1550	560	855	235	14.5	GB
8.25R16LT	14/14+	126/122	K	6.50H	1500	670	1700	670	855	235	14.5	GB
8.25R16LT	16	128/124	K	6.50H	1600	770	1800	770	855	235	14.5	GB
8.25R20	12	133/131	L	6.5	1950	720	2060	720	974	236	14.5	GB
8.25R20	14	136/134	L	6.5	2120	830	2240	830	974	236	14.5	GB
8.25R20	16	139/137	L	6.5	2300	930	2430	930	974	236	14.5	GB
9.00R20	14	141/139	K	7.0	2430	790	2575	790	1019	259	15.5	TRA
9.00R20	16	144/142	K	7.0	2650	900	2800	900	1019	259	15.5	GB
10.00R20	16	146/143	K	7.5	2725	830	3000	830	1054	278	16.0	TRA
10.00R20	18	149/146	K	7.5	3000	930	3250	930	1054	278	16.0	GB
11.00R20	16	150/147	K	8.0	3075	830	3350	830	1085	293	17.0	GB
11.00R20	18	152/149	K	8.0	3250	930	3550	930	1085	293	17.0	GB

- Suitable for on/off road conditions.
- It is also suitable for trucks running with high speed on highway for short distance.



LDO910
Radial Truck Tire (Short Haul)

Size	Ply Rating	Load Index	Speed Symbols	Rim	Max Load and Inflated Pressure				Overall Diameter (mm)	Section Width (mm)	Tread Depth (mm)	Operative Norm
					Dual		Single					
					kg	kPa	kg	kPa				
12.00R20	18PR	154/151	F	8.5	3450	830	3750	830	1125	315	17.5	GB

- Suitable for on/off road conditions .
- Multi-step groove design reduces block deformation and stone retention.
- Reinforced bead enhances Load capability.
- Excellent braking and driving performance .



D990
Radial Truck Tire (Short Haul)

Size	Ply Rating	Load Index	Speed Symbols	Rim	Max Load and Inflated Pressure				Overall Diameter (mm)	Section Width (mm)	Tread Depth (mm)	Operative Norm
					Dual		Single					
					kg	kPa	kg	kPa				
14.00R20	18	160/157	F	10.00W	4125	700	4500	700	1238	370	19.5	ETRTO
14.00R20	20	164/160	F	10.00W	4500	750	5000	750	1238	370	19.5	ETRTO
16.00R20	22	174/171	F	11.25	6700	760	6150	760	1320	438	20.5	ETRTO

- Suitable for off road conditions.



LDM991
Radial Truck Tire (Short Haul)

Size	Ply Rating	Load Index	Speed Symbols	Rim	Max Load and Inflated Pressure				Overall Diameter (mm)	Section Width (mm)	Tread Depth (mm)	Operative Norm
					Dual		Single					
					kg	kPa	kg	kPa				
14.00R20	18	160/157	F	10.00W	4125	700	4500	700	1238	370	19.5	ETRTO
14.00R20	20	164/160	F	10.00W	4500	750	5000	750	1238	370	19.5	ETRTO

- Suitable for off road conditions.





D965

Radial Truck Tire (Short Haul)

Size	Ply Rating	Load Index	Speed Symbols	Rim	Max Load and Inflated Pressure				Overall Diameter (mm)	Section Width (mm)	Tread Depth (mm)	Operative Norm
					Dual		Single					
					kg	kPa	kg	kPa				
8.25R20	12	133/131	L	6.5	1950	720	2060	720	974	236	17.5	GB
8.25R20	14	136/134	L	6.5	2120	830	2240	830	974	236	17.5	GB
8.25R20	16	139/137	L	6.5	2300	930	2430	930	974	236	17.5	GB
9.00R20	16	144/142	K	7.0	2650	900	2800	900	1019	259	17.5	GB
10.00R20	18	149/146	K	7.5	3000	930	3250	930	1054	278	17.5	GB
11.00R20	18	152/149	K	8.0	3250	930	3550	930	1085	293	17.5	GB
12.00R20	18	154/151	J	8.5	3450	830	3750	830	1125	315	17.5	GB

- Drive axle for on/off road conditions.
- Deep and rigid block design for good traction.
- Cut resistance compound.



A968

Radial Truck Tire (Medium Haul)

Size	Ply Rating	Load Index	Speed Symbols	Rim	Max Load and Inflated Pressure				Overall Diameter (mm)	Section Width (mm)	Tread Depth (mm)	Operative Norm
					Dual		Single					
					kg	kPa	kg	kPa				
10.00R15TR	12	133/131	M	7.50	1950	620	2060	620	927	278	17.5	TRA
10.00R15TR	14	137/135	L	7.50	2180	720	2300	720	927	278	17.5	TRA
10.00R15TR	16	141/139	K	7.50	2430	830	2575	830	927	278	17.5	TRA
11R17.5	12	133/131	M	8.25	1950	620	2060	620	927	279	17.5	TRA
11R17.5	14	137/135	L	8.25	2180	720	2300	720	927	279	17.5	TRA
11R17.5	16	141/139	K	8.25	2430	830	2575	830	927	279	17.5	TRA
11R22.5	14	144/142	L	8.25	2650	720	2800	720	1054	279	17.5	TRA
11R22.5	16	146/143	K	8.25	2725	830	3000	830	1054	279	17.5	TRA
11R22.5	18	148/145	K	8.25	2900	850	3150	850	1050	279	17.5	ETRTO
11R24.5	14	146/143	L	8.25	2725	720	3000	720	1104	279	17.5	TRA
11R24.5	16	149/146	K	8.25	3000	830	3250	830	1104	279	17.5	TRA

- Typical combined pattern design suitable for all position of trucks on normal grade road.
- Good braking and grip on wet road.



D960

Radial Truck Tire (Short Haul)

Size	Ply Rating	Load Index	Speed Symbols	Rim	Max Load and Inflated Pressure				Overall Diameter (mm)	Section Width (mm)	Tread Depth (mm)	Operative Norm
					Dual		Single					
					kg	kPa	kg	kPa				
9.5R17.5	14	129/127	K	6.75	1750	750	1850	750	842	240	16.0	ETRTO
9.5R17.5	18	143/141	K	6.75	2575	875	2725	875	842	240	16.0	ETRTO
11.00R20	16	150/147	K	8.0	3075	830	3350	830	1085	293	21.0	GB
11.00R20	18	152/149	K	8.0	3250	930	3550	930	1085	293	21.0	GB
12.00R20	18	154/151	K	8.5	3450	830	3750	830	1125	315	21.0	TRA
12.00R24	18	156/153	K	8.5	3650	775	4000	775	1226	313	21.0	ETRTO
12.00R24	20	160/156	K	8.5	4000	850	4500	850	1226	313	21.0	ETRTO
13R22.5	18	156/150	K	9.75	3350	875	4000	875	1124	320	21.0	ETRTO
265/70R19.5	16	140/138	K	7.50	2360	775	2500	775	867	262	15.5	ETRTO
265/70R19.5	18	143/141	K	7.50	2575	850	2725	850	867	262	15.5	ETRTO
275/70R22.5	16	148/145	K	8.25	2900	900	3150	900	958	276	21.0	ETRTO
275/70R22.5	16	144/141	K	8.25	2575	830	2800	830	958	276	21.0	GB
315/80R22.5	18	154/150	M	9.00	3350	825	3750	825	1076	312	21.0	ETRTO
315/80R22.5	20	156/150 (154/150)	L(M)	9.00	3350	850	4000	850	1082	312	21.0	ETRTO

- Drive axle for on/off road conditions.
- Deep and rigid block design for long life and good traction.
- Cut resistance compound.



LTR968

Radial Truck Tire (Long Haul)

Size	Ply Rating	Load Index	Speed Symbols	Rim	Max Load and Inflated Pressure				Overall Diameter (mm)	Section Width (mm)	Tread Depth (mm)	Operative Norm
					Dual		Single					
					kg	kPa	kg	kPa				
275/70R22.5	16	148/145	K	8.25	2900	900	3150	900	958	276	17	ETRTO

- Typical combined pattern design suitable for all position of trucks on normal grade road.





LLA08
Radial Truck Tire (Medium Haul)

Size	Ply Rating	Load Index	Speed Symbols	Rim	Max Load and Inflated Pressure				Overall Diameter (mm)	Section Width (mm)	Tread Depth (mm)	Operative Norm
					Dual		Single					
					kg	kPa	kg	kPa				
6.50R16LT	10	107/102	M	5.50F	850	580	975	560	750	185	10.5	GB
6.50R16LT	12	110/105	L	5.50F	925	670	1060	670	750	185	10.5	GB
7.00R16LT	12	115/110	M	5.50F	1060	670	1215	670	775	200	11.5	GB
7.00R16LT	14	117/116	L	5.50F	1250	700	1285	700	775	200	11.5	-
7.00R16LT	14	118/114	L	5.50F	1180	770	1320	770	775	200	11.5	GB
7.50R16LT	12	120/116	M	6.00G	1250	670	1400	670	805	215	12.5	GB
7.50R16LT	14	122/118	M	6.00G	1320	770	1500	770	805	215	12.5	GB
7.50R20	12	128/126	L	6.00	1700	760	1800	760	935	215	13.5	GB
7.50R20	14	130/128	K	6.00	1800	830	1900	830	935	215	13.5	GB
8.25R16LT	14	128/126	K	6.50H	1700	675	1800	675	855	235	13.5	-
8.25R16LT	12	123/119	M	6.50H	1360	560	1550	560	855	235	13.5	GB
8.25R16LT	14/14+	126/122	L	6.50H	1500	670	1700	670	855	235	13.5	GB
8.25R16LT	16	128/124	L	6.50H	1600	770	1800	770	855	235	13.5	GB
8.25R20	12	133/131	L	6.50	1950	720	2060	720	974	236	15.5	GB
8.25R20	14	136/134	L	6.50	2120	830	2240	830	974	236	15.5	GB
8.25R20	16	139/137	L	6.50	2300	930	2430	930	974	236	15.5	GB
9.00R20	14	141/139	K	7.00	2430	790	2575	790	1019	259	15.0	TRA
9.00R20	16	144/142	K	7.00	2650	900	2800	900	1019	259	15.0	GB
10.00R20	16	146/143	K	7.50	2725	830	3000	830	1054	278	15.5	TRA
10.00R20	18	149/146	K	7.50	3000	930	3250	930	1054	278	15.5	GB
11.00R20	16	150/147	K	8.00	3075	830	3350	830	1085	293	16.5	GB
11.00R20	18	152/149	K	8.00	3250	930	3550	930	1085	293	16.5	GB
11R22.5	14	144/142	K	8.25	2650	720	2800	720	1054	279	15.5	TRA
11R22.5	16	146/143	K	8.25	2725	830	3000	830	1054	279	15.5	TRA
11R22.5	16	148/145	K	8.25	2900	850	3150	850	1050	279	15.5	ETRTO
11R24.5	14	146/143	K	8.25	2725	720	3000	720	1104	279	15.5	TRA
11R24.5	16	149/146	K	8.25	3000	830	3250	830	1104	279	15.5	TRA
12.00R20	18	154/151	K	8.50	3450	830	3750	830	1125	315	17.0	TRA
12R22.5	16	152/148	K	9.00	3150	850	3550	850	1084	300	17.0	ETRTO
12.00R24	18	156/153	K	8.50	3650	775	4000	775	1226	313	17.0	ETRTO
12.00R24	20	160/156	K	8.50	4000	850	4500	850	1226	313	17.0	ETRTO
315/80R22.5	18	154/150	M	9.00	3350	825	3750	825	1076	312	17.0	ETRTO
315/80R22.5	20	156/150	L	9.00	3350	850	4000	850	1076	312	17.0	ETRTO
12R24.5	16	152/149	K	9.00	3250	830	2550	830	1135	300	16.0	TRA
12R24.5	18	154/151	K	9.00	3450	930	3750	930	1135	300	16.0	GB

- Typical combined pattern.
- Suitable for trucks of different tonnages which run on highway and normal road.
- Strong wear resistance, low heat generation.
- Good handling.



LLA58
Radial Truck Tire (Medium Haul)

Size	Ply Rating	Load Index	Speed Symbols	Rim	Max Load and Inflated Pressure				Overall Diameter (mm)	Section Width (mm)	Tread Depth (mm)	Operative Norm
					Dual		Single					
					kg	kPa	kg	kPa				
11.00R20	16	150/147	L	8.0	3075	830	3350	830	1085	293	14.5	GB
11.00R20	18	152/149	L	8.0	3250	930	3550	930	1085	293	14.5	GB
12.00R24	18	156/153	K	8.5	3650	775	4000	775	1226	313	15.5	ETRTO
12.00R24	20	160/156	K	8.5	4000	850	4500	850	1226	313	15.5	ETRTO

- Typical combined pattern.
- Suitable for all position of trucks running on highway and normal road.



LLA01
Radial Truck Tire (Medium Haul)

Size	Ply Rating	Load Index	Speed Symbols	Rim	Max Load and Inflated Pressure				Overall Diameter (mm)	Section Width (mm)	Tread Depth (mm)	Operative Norm
					Dual		Single					
					kg	kPa	kg	kPa				
9.00R20	14	141/139	K	7.0	2430	790	2575	790	1019	259	15.5	TRA
9.00R20	16	144/142	K	7.0	2650	900	2800	900	1019	259	15.5	GB
10.00R20	16	146/143	K	7.5	2725	830	3000	830	1054	278	17.0	TRA
10.00R20	18	149/146	K	7.5	3000	930	3250	930	1054	278	17.0	GB
11.00R20	16	150/147	K	8.0	3075	830	3350	830	1085	293	17.5	GB
11.00R20	18	152/149	K	8.0	3250	930	3550	930	1085	293	17.5	GB
13R22.5	18	156/150	K	9.8	3350	875	4000	875	1124	320	17.5	ETRTO

- Typical combined pattern.
- Suitable for trucks of different tonnages which run on highway and normal road.



Mining



MINE-M

Mining

1. Heavy Load. 2. Superior Traction. 3. Stone Ejectors



LD0986

LD0993

D960+

LD0912

LD0983

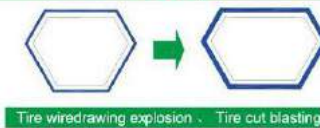
Technological Highlights

NO.1



▶ With Application of patented technologies , the durability of the bead is two times of the original.

NO.2



▶ With application of bead seamless winding technology, tire wiredrawing explosion and tire cut blasting are reduced.

NO.3



▶ With application of patented belt technologies , shoulder deformation can be suppressed to prevent crown burst.

NO.4



▶ New base rubber design improve shoulder durability and puncture resistance .

NO.5



▶ With application of HT steel cord and no welding spots steels , carcass strength is increased by 40%.

NO.6



Soft compound or hard compound is available for different roads.

▶ Thicker sidewall and special compound provide excellent chip, cut and abrasion resistance .



LDO986
Radial Truck Tire(Short Haul)



Size	Ply Rating	Load Index	Speed Symbols	Rim	Max Load and Inflated Pressure				Overall Diameter (mm)	Section Width (mm)	Tread Depth (mm)	Operative Norm
					Dual		Single					
					kg	kPa	kg	kPa				
11R22.5	14	144/142	F	8.25	2650	720	2800	720	1054	279	24.0	TRA
11R22.5	16	146/143	F	8.25	2725	830	3000	830	1054	279	24.0	TRA
11R22.5	18	148/145	F	8.25	2900	850	3150	850	1050	279	24.0	ETRTO
12R22.5	16	150/147	F	9.00	3075	830	3350	830	1085	300	24.0	GB
12R22.5	16	152/148	F	9.00	3150	850	3550	850	1084	300	24.0	ETRTO
13R22.5	18	156/150	F	9.00	3350	875	4000	875	1124	320	24.0	ETRTO
13R22.5	18	154/151	F	9.00	1450	830	3750	830	1124	320	24.0	GB
295/80R22.5	16	152/148	F	9.00	3150	850	3550	850	1044	298	24.0	ETRTO
295/80R22.5	18	152/149	F	9.00	3250	900	3550	900	1044	298	24.0	ETRTO
315/80R22.5	18	154/150	F	9.00	3350	825	3750	825	1076	312	24.0	ETRTO
315/80R22.5	20	156/150	F	9.00	3350	850	4000	850	1076	312	24.0	GB

- No chip, no chunk.
- No shoulder separation.



LDO983
Radial Truck Tire(Short Haul)



Size	Ply Rating	Load Index	Speed Symbols	Rim	Max Load and Inflated Pressure				Overall Diameter (mm)	Section Width (mm)	Tread Depth (mm)	Operative Norm
					Dual		Single					
					kg	kPa	kg	kPa				
9.00R20	16	144/142	F	7.0	2650	900	2800	900	1019	259	23.5	GB
10.00R20	18	149/146	F	7.5	3000	930	3250	930	1054	278	23.5	GB
11.00R20	18	152/149	F	8.0	3250	930	3550	930	1085	293	23.5	GB
12.00R20	18	154/151	F	8.5	3450	830	3750	830	1125	315	23.5	GB
12.00R20	20	156/153	F	8.5	3650	900	4000	900	1125	315	23.5	GB
12.00R24	18	156/153	F	8.5	3650	775	4000	775	1226	313	24.0	ETRTO
12.00R24	20	160/156	F	8.5	4000	850	4500	850	1226	313	24.0	ETRTO
295/80R22.5	16	152/148	F	9.00	3150	850	3550	850	1044	298	22.0	ETRTO
295/80R22.5	18	152/149	F	9.00	3250	900	3550	900	1044	298	22.0	GB

- No chip, no chunk.
- No shoulder separation.



D960+
Radial Truck Tire(Short Haul)



Size	Ply Rating	Load Index	Speed Symbols	Rim	Max Load and Inflated Pressure				Overall Diameter (mm)	Section Width (mm)	Tread Depth (mm)	Operative Norm
					Dual		Single					
					kg	kPa	kg	kPa				
295/80R22.5	16	152/148	F	9.00	3150	850	3550	850	1044	298	22.0	ETRTO
295/80R22.5	18	152/149	F	9.00	3250	900	3550	900	1044	298	22.0	GB
315/80R22.5	18	154/150	F	9.00	3350	825	3750	825	1076	312	25.0	ETRTO
315/80R22.5	20	156/150	F	9.00	3350	850	4000	850	1076	312	25.0	ETRTO

- No chip, no chunk.
- No shoulder separation.



LDO993
Radial Truck Tire(Short Haul)



Size	Ply Rating	Load Index	Speed Symbols	Rim	Max Load and Inflated Pressure				Overall Diameter (mm)	Section Width (mm)	Tread Depth (mm)	Operative Norm
					Dual		Single					
					kg	kPa	kg	kPa				
8.25R16LT	16	128/124	F	6.50H	1600	770	1800	770	855	235	18.0	GB
9.00R20	16	144/142	F	7.0	2650	900	2800	900	1019	259	24.5	GB
10.00R20	18	149/146	F	7.5	3000	930	3250	930	1054	278	24.5	GB
11.00R20	18	152/149	F	8.0	3250	930	3550	930	1085	293	24.5	GB
12.00R20	18	154/151	F	8.5	3450	830	3750	830	1125	315	24.5	GB
12.00R20	20	156/153	F	8.5	3650	900	4000	900	1125	315	24.5	GB

- Good traction resistance.
- Chip, cut and abrasion resistance tread compound.
- Deep tread depth increases mileage and service life.





LD0979
Radial Truck Tire (Short Haul)



Size	Ply Rating	Load Index	Speed Symbols	Rim	Max Load and Inflated Pressure				Overall Diameter (mm)	Section Width (mm)	Tread Depth (mm)	Operative Norm
					Dual		Single					
					kg	kPa	kg	kPa				
10.00R20	16	146/143	F	7.5	2725	830	3000	830	1054	278	24.0	GB
10.00R20	18	149/146	F	7.5	3000	930	3250	930	1054	278	24.0	GB
11.00R20	18	152/149	F	8.0	3250	930	3550	930	1085	293	22.0	GB
12.00R20	18	154/151	F	8.5	3450	830	3750	830	1125	315	22.0	TRA
12.00R20	20	156/153	F	8.5	3650	900	4000	900	1125	315	22.0	GB

- Powerful traction resistance, grip climbing ability and self-cleaning.
- Deep-groove design for excellent wear resistance.
- Deep block design for good wearability, cut and tear resistance.
- The new structural design of the bead with excellent Load capacity.



LD0912
Radial Truck Tire (Short Haul)



Size	Ply Rating	Load Index	Speed Symbols	Rim	Max Load and Inflated Pressure				Overall Diameter (mm)	Section Width (mm)	Tread Depth (mm)	Operative Norm
					Dual		Single					
					kg	kPa	kg	kPa				
11.00R20	18	152/149	F	8.0	3250	930	3550	930	1085	293	22	GB
11R22.5	16	148/145	J	8.25	2900	850	3150	850	1050	279	20	ETRTO
275/80R22.5	16	149/146	J	8.25	3000	850	3250	850	1012	276	20	ETRTO
295/80R22.5	18	152/149	F	9.00	3250	900	3550	900	1044	298	20	GB
295/80R22.5	16	152/148	F	9.00	3150	850	3550	850	1044	298	20	ETRTO

- Transversal pattern block and wide pattern groove offer better driving performance, wet grip, climbing and self-cleaning ability on mud ground.
- Large-angle groove design with stone ejector minimizes stone retention to protect base compound.
- Reinforced bead enhances load capability.



LD0989
Radial Truck Tire (Short Haul)



Size	Ply Rating	Load Index	Speed Symbols	Rim	Max Load and Inflated Pressure				Overall Diameter (mm)	Section Width (mm)	Tread Depth (mm)	Operative Norm
					Dual		Single					
					kg	kPa	kg	kPa				
11.00R20	18	152/149	F	8.0	3250	930	3550	930	1085	293	22	GB
12.00R20	18	154/151	F	8.5	3450	830	3750	830	1125	315	22	GB
12.00R20	20	156/153	F	8.5	3650	900	4000	900	1125	315	22	GB

- Powerful traction resistance, grip climbing ability and self-cleaning.
- Deep-groove design for excellent wear resistance.
- Deep block design for good wearability, cut and tear resistance.
- The new structural design of the bead with excellent Load capacity.



LLD10
Radial Truck Tire (Short Haul)

Size	Ply Rating	Load Index	Speed Symbols	Rim	Max Load and Inflated Pressure				Overall Diameter (mm)	Section Width (mm)	Tread Depth (mm)	Operative Norm
					Dual		Single					
					kg	kPa	kg	kPa				
9.00R20	14	141/139	F	7.0	2430	790	2575	790	1019	259	20.0	TRA
9.00R20	16	144/142	F	7.0	2650	900	2800	900	1019	259	20.0	GB
10.00R20	16	146/143	J	7.5	2725	830	3000	830	1054	278	20.0	TRA
10.00R20	18	149/146	J	7.5	3000	930	3250	930	1054	278	20.0	GB
11.00R20	16	150/147	F	8.0	3075	830	3350	830	1085	293	20.0	GB
11.00R20	18	152/149	F	8.0	3250	930	3550	930	1085	293	20.0	GB
12.00R20	18	154/151	K	8.5	3450	830	3750	830	1125	315	21.0	TRA
13R22.5	18	156/150	F	9.75	3350	875	4000	875	1124	320	20.0	ETRTO
13R22.5	18	154/151	K	9.75	3450	830	3750	830	1124	320	20.0	GB

- Suitable for off road conditions.
- Cut resistance compound.



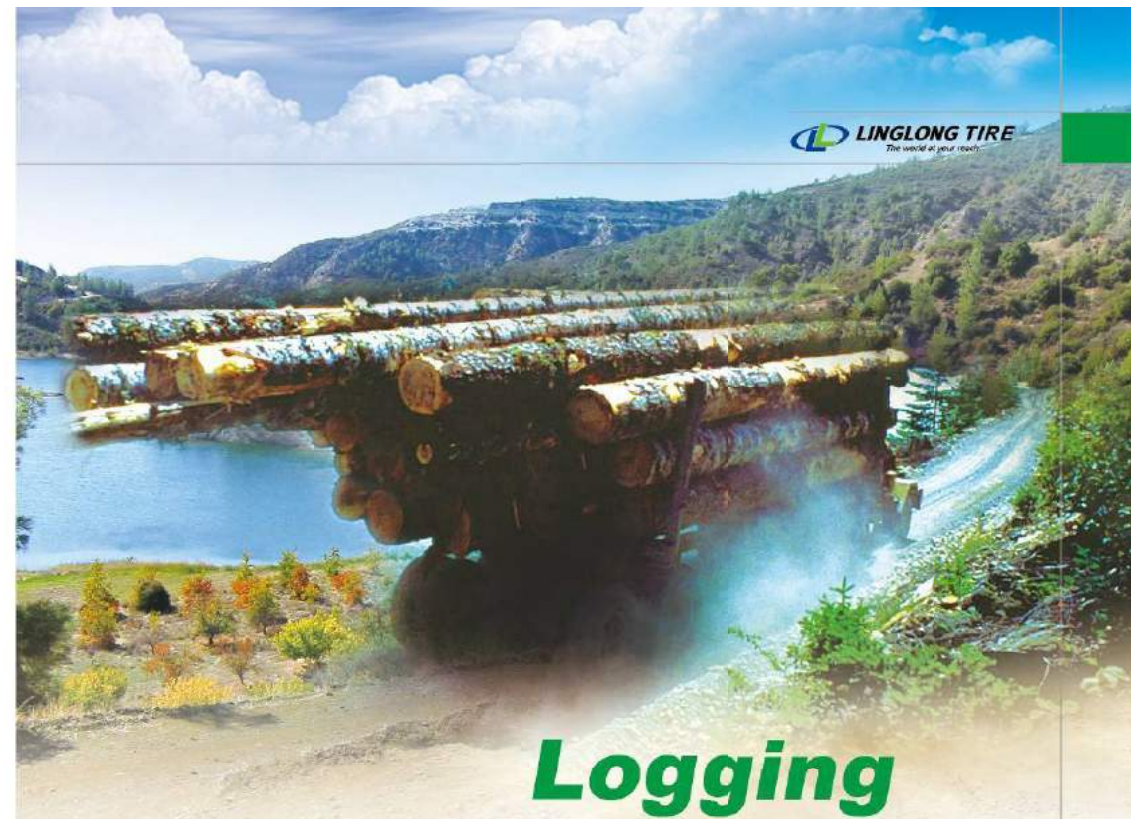


D969

Radial Truck Tire (Short Haul)

Size	Ply Rating	Load Index	Speed Symbols	Rim	Max Load and Inflated Pressure				Overall Diameter (mm)	Section Width (mm)	Tread Depth (mm)	Operative Norm
					Dual		Single					
					kg	kPa	kg	kPa				
7.00R16LT	12	115/110	M	5.50F	1060	670	1215	670	775	200	15.5	GB
7.00R16LT	14	118/114	L	5.50F	1180	770	1320	770	775	200	15.5	GB
7.60R16LT	12	120/116	F	6.00G	1250	670	1400	670	805	215	17.5	GB
7.50R16LT	14	122/118	F	6.00G	1320	770	1500	770	805	215	17.5	GB
8.25R16LT	12	123/119	F	6.50H	1360	560	1550	560	855	235	17.5	GB
8.25R16LT	14/14+	126/122	F	6.50H	1500	670	1700	670	855	235	17.5	GB
8.25R16LT	16	128/124	F	6.50H	1600	770	1800	770	855	235	17.5	GB
8.25R20	12	133/131	F	6.5	1950	720	2060	720	974	236	21.5	GB
8.25R20	14	136/134	F	6.5	2120	830	2240	830	974	236	21.5	GB
8.25R20	16	139/137	F	6.5	2300	930	2430	930	974	236	21.5	GB
9.00R20	16	144/142	F	7.0	2650	900	2800	900	1019	259	23.5	GB
10.00R20	18	149/146	J	7.5	3000	930	3250	930	1054	278	25.5	GB
11.00R20	18	152/149	F	8.0	3250	930	3550	930	1085	293	25.5	GB
12.00R20	18	154/151	F	8.5	3450	830	3750	830	1125	315	25.5	TRA
12R22.5	18	152/149	J	9.00	3250	930	3550	930	1085	300	25.5	GB
295/80R22.5	16	152/148	F	9.00	3150	850	3550	850	1044	298	22.0	ETRTO
295/80R22.5	18	152/149	F	9.00	3250	900	3550	900	1044	298	22.0	GB

- Suitable for hilly area and mine etc., off road conditions.
- Off-road pattern block ensures powerful traction and good self-cleaning ability.
- Optimized compound delivers good puncture resistance.
- Long life.



Logging



D950

Radial Truck Tire (Short Haul)

Size	Ply Rating	Load Index	Speed Symbols	Rim	Max Load and Inflated Pressure				Overall Diameter (mm)	Section Width (mm)	Tread Depth (mm)	Operative Norm
					Dual		Single					
					kg	kPa	kg	kPa				
11R22.5	14	144/142	K	8.25	2650	720	2800	720	1054	279	23.0	TRA
11R22.5	16	146/143	K	8.25	2725	830	3000	830	1054	279	23.0	IRA
11R22.5	16	148/145	K	8.25	2900	850	3150	850	1050	279	23.0	ETRTO
11R24.5	14	146/143	F	8.25	2725	720	3000	720	1104	279	25.0	TRA
11R24.5	16	149/146	F	8.25	3000	830	3250	830	1104	279	25.0	TRA

- Drive axle for on/off road conditions.
- Deep and rigid block design for good traction.
- Cut resistance compound.
- Used for logging conditions where high traction required.



Light Truck Tire



New

Light Truck Tire

1. Long Tire Life. 2. Strong Casings. 3. Excellent Stability.



LFL866

LAR919

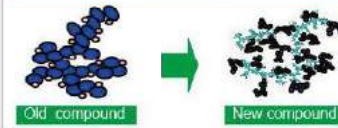
LAR959

LDL831

LDL813

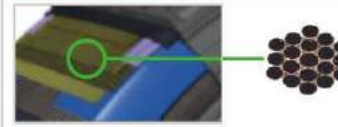
Technological Highlights

NO.1



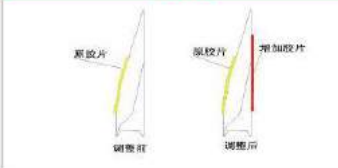
► The newly developed compound for wear resistance contains the famous carbon black, CARBOT, imported from the USA. The road test shows that the road haul can be increased by 20%.

NO.2



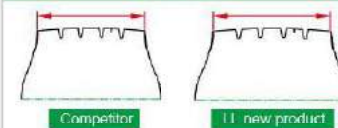
► With no welding spots steels, the strain resistance can be promoted by 40% increasing the service life of carcass.

NO.3



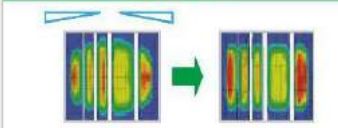
► Optimize bead structure to prevent sidewall separation, and load capacity is excellent.

NO.4



► Add the tread width and groove depth, increasing the wearing rubber by 10%.

NO.5



► Optimized footprint shape for uneven wear resistance.



LFL866



Radial Truck and Bus Tire(Long Haul)

Size	Ply Rating	Load Index	Speed Symbols	Rim	Max Load and Inflated Pressure				Overall Diameter (mm)	Section Width (mm)	Tread Depth (mm)	Operative Norm
					Dual		Single					
					kg	kPa	kg	kPa				
6.50R16LT	10	107/102	M	5.50F	850	560	975	560	750	185	12.0	GB
6.50R16LT	12	110/105	L	5.50F	925	670	1060	670	750	185	12.0	GB
7.00R16LT	12	115/110	M	5.50F	1060	670	1215	670	775	200	13.0	GB
7.00R16LT	14	118/114	L	5.50F	1180	770	1320	770	775	200	13.0	GB
7.50R16LT	12	120/116	M	6.00G	1250	670	1400	670	805	215	13.0	GB
7.50R16LT	14	122/118	M	6.00G	1320	770	1500	770	805	215	13.0	GB
7.50R15LT	8	110/105	L	6.00G	925	460	1060	460	760	215	13.0	GB
7.50R15LT	10	115/110	L	6.00G	1060	560	1215	560	780	215	13.0	GB
215/75R17.5	14	126/124	M	6.00	1600	700	1700	700	767	212	14.5	ETRTO
215/75R17.5	16	135/133	J	6.00	2060	850	2180	850	767	212	14.5	ETRTO
215/75R17.5	14	125/122	M	6.00	1500	760	1650	760	767	211	14.5	GB
215/75R17.5	16	127/124	J	6.00	1600	830	1750	830	767	211	14.5	GB
235/75R17.5	14	132/130	M	6.75	1900	775	2000	775	797	233	14.5	ETRTO
235/75R17.5	16	141/140	J	6.75	2500	850	2575	850	797	233	17.0	ETRTO
235/75R17.5	18	143/141	J	6.75	2575	875	2725	875	797	233	14.5	ETRTO
235/75R17.5	14	129/126	M	6.75	1700	760	1850	760	797	233	14.5	GB
235/75R17.5	16	132/129	J	6.75	1850	830	2000	830	797	233	14.5	GB
245/70R17.5	18	143/141	J	7.50	2575	875	2725	875	789	248	14.5	ETRTO

- Extra wide tread design for high mileage and even wear.
- Zig-zag grooves for excellent handling.
- Optimize structure design.



LDL831



Radial truck tire(Long Haul)

Size	Ply Rating	Load Index	Speed Symbols	Rim	Max Load and Inflated Pressure				Overall Diameter (mm)	Section Width (mm)	Tread Depth (mm)	Operative Norm
					Dual		Single					
					kg	kPa	kg	kPa				
215/75R17.5	14	126/124	M	6.00	1600	700	1700	700	767	212	16.0	ETRTO
215/75R17.5	16	135/133	J	6.00	2060	850	2180	850	767	212	16.0	ETRTO
215/75R17.5	14	125/122	M	6.00	1500	760	1650	760	767	211	16.0	GB
215/75R17.5	16	127/124	J	6.00	1600	830	1750	830	767	211	16.0	GB
235/75R17.5	14	132/130	M	6.75	1900	775	2000	775	797	233	17.0	ETRTO
235/75R17.5	16	141/140	J	6.75	2500	850	2575	850	797	233	17.0	ETRTO
235/75R17.5	18	143/141	J	6.75	2575	875	2725	875	797	233	17.0	ETRTO
235/75R17.5	14	129/126	L	6.75	1700	760	1850	760	797	233	17.0	GB
235/75R17.5	16	132/129	J	6.75	1850	830	2000	830	797	233	17.0	GB
245/70R17.5	18	143/141	J	7.50	2575	875	2725	875	789	248	18.0	ETRTO

- Typical block pattern design make good towing and grip on wet and dry road.
- Strong wear resistance and long life.
- Retreadability.



LAR919



Radial Truck Tire (Medium Haul)

Size	Ply Rating	Load Index	Speed Symbols	Rim	Max Load and Inflated Pressure				Overall Diameter (mm)	Section Width (mm)	Tread Depth (mm)	Operative Norm
					Dual		Single					
					kg	kPa	kg	kPa				
6.00R14LT	8	95/90	K	4 1/2J	600	450	690	450	672	168	10.0	GB
7.50R16LT	14	122/118	K	6.00G	1320	770	1600	770	805	215	15.0	GB

- Pattern block design reduce shoulder heat.
- Wide running surface and higher saturation design improve the wear mileage.
- Powerful traction, grip and climbing performance.





LDL813

Radial truck tire(Medium Haul)



Size	Ply Rating	Load Index	Speed Symbols	Rim	Max Load and Inflated Pressure				Overall Diameter (mm)	Section Width (mm)	Tread Depth (mm)	Operative Norm
					Dual		Single					
					kg	kPa	kg	kPa				
6.50R16LT	12	110/105	K	5.50F	925	670	1060	670	750	185	12.5	GB
7.00R16LT	14	118/114	K	5.50F	1180	770	1320	770	775	200	14.0	GB
7.50R16LT	14	122/118	K	6.00G	1320	770	1500	770	805	215	14.5	GB
8.25R16LT	16	128/124	L	6.50H	1600	770	1800	770	855	235	15.5	GB
8.25R20	16	139/137	K	6.5	2300	930	2430	930	974	236	18.0	GB
9.00R16LT	16	134/129	K	6.50H	1850	770	2120	770	890	255	17.0	GB
9.00R20	16	144/142	K	7.0	2650	900	2800	900	1019	259	16.0	GB
10.00R20	18	149/146	K	7.5	3000	930	3250	930	1054	278	18.0	GB

- Suitable for drive axle of trucks riding on highway.
- Long life.
- Good grip performance.
- Low eccentric wear.



LAR959

Radial Truck and Bus Tire(Short Haul)



Size	Ply Rating	Load Index	Speed Symbols	Rim	Max Load and Inflated Pressure				Overall Diameter (mm)	Section Width (mm)	Tread Depth (mm)	Operative Norm
					Dual		Single					
					kg	kPa	kg	kPa				
6.00R14LT	8	95/90	F	4 1/2J	600	450	630	450	672	168	12.5	GB
6.50R16LT	12	110/105	F	5.50F	925	670	1060	670	750	185	14.0	GB
7.00R16LT	14	118/114	F	5.50F	1180	770	1320	770	775	200	17.0	GB
7.50R16LT	14	122/118	F	6.00G	1320	770	1500	770	805	215	18.0	GB
8.25R16LT	16	128/124	D	6.50H	1600	770	1800	770	855	235	18.0	GB
8.25R20	16	139/137	F	6.50	2300	930	2430	930	974	236	18.0	GB
9.00R20	16	144/142	D	7.00	2650	900	2800	900	1019	259	20.0	GB
9.00R16LT	16	134/129	D	6.50H	1850	770	2120	770	890	255	18.0	GB

- Wide and deep tread grooves for long tire life.
- Excellent cutting and chipping resistance.
- Robust tread and high traction on rough surfaces.



LLF26

Radial Truck and Bus Tire(Long Haul)

Size	Ply Rating	Load Index	Speed Symbols	Rim	Max Load and Inflated Pressure				Overall Diameter (mm)	Section Width (mm)	Tread Depth (mm)	Operative Norm
					Dual		Single					
					kg	kPa	kg	kPa				
7.50R16LT	12	120/116	M	6.00G	1250	670	1400	670	805	215	11.5	GB
7.50R16LT	14	122/118	M	6.00G	1320	770	1500	770	805	215	11.5	GB
7.50R20	12	128/126	L	6.00	1700	760	1800	760	935	215	11.5	GB
7.50R20	14	130/128	K	6.00	1800	830	1900	830	935	215	11.5	GB
8R19.5	12	124/122	M	6.00	1500	760	1600	760	859	203	12.5	TRA
8.25R15TR	12	126/124	M	6.50	1600	720	1700	720	847	236	12.5	TRA
8.25R16TR	14	129/127	L	6.50	1750	830	1850	830	847	236	12.5	TRA
8.25R16LT	12	123/119	M	6.50H	1360	560	1550	560	855	235	12.5	GB
8.25R16LT	14/14+	126/122	L	6.50H	1500	670	1700	670	855	235	12.5	GB
8.25R16LT	14	128/126	K	6.50H	1700	675	1800	675	855	235	12.5	-
8.25R16LT	16	128/124	L	6.50H	1600	770	1800	770	855	235	12.5	GB
8.25R20	12	133/131	L	6.50	1950	720	2060	720	974	236	12.5	GB
8.25R20	14	136/134	L	6.50	2120	830	2240	830	974	236	12.5	GB
8.25R20	16	139/137	L	6.50	2300	930	2430	930	974	236	12.5	GB
9.5R17.5	14	129/127	M	6.75	1750	750	1850	750	842	240	12.0	ETRTO
9.5R17.5	18	143/141	M	6.75	2575	875	2725	875	842	240	12.0	ETRTO

- Suitable for all position of buses and medium trucks running on the high-grade road.



LLF86

Radial Truck and Bus Tire(Long Haul)

Size	Ply Rating	Load Index	Speed Symbols	Rim	Max Load and Inflated Pressure				Overall Diameter (mm)	Section Width (mm)	Tread Depth (mm)	Operative Norm
					Dual		Single					
					kg	kPa	kg	kPa				
215/75R17.5	14	126/124	L/M	6.00	1600	700	1700	700	767	212	12.5	ETRTO
215/75R17.5	16	135/133	J/L	6.00	2060	850	2180	850	767	212	12.5	ETRTO

- Suitable for all position of buses and medium trucks running on the high-grade road.





LAL800

Radial Truck Tire on Highway (Long Haul)

Size	Ply Rating	Load Index	Speed Symbols	Rim	Max Load and Inflated Pressure				Overall Diameter (mm)	Section Width (mm)	Tread Depth (mm)	Operative Norm
					Dual		Single					
					kg	kPa	kg	kPa				
7.50R16LT	12	120/116	M	6.00G	1250	670	1400	670	805	215	11.5	GB
7.50R16LT	14	122/118	M	6.00G	1320	770	1500	770	805	215	11.5	GB
8.25R16LT	12	123/119	M	6.50H	1360	660	1550	660	855	235	11.5	GB
8.25R16LT	14/14+	126/122	L	6.50H	1500	670	1700	670	855	235	11.5	GB
8.25R16LT	16	128/124	L	6.50H	1600	770	1800	770	855	235	11.5	GB
8.25R20	12	133/131	L	6.5	1950	720	2060	720	974	236	12.0	GB
8.25R20	14	136/134	L	6.5	2120	830	2240	830	974	236	12.0	GB
8.25R20	16	139/137	L	6.5	2300	930	2430	930	974	236	12.0	GB

- Good handling and driving.
- Long life.



F825

Radial Truck and Bus Tire (Medium Haul)

Size	Ply Rating	Load Index	Speed Symbols	Rim	Max Load and Inflated Pressure				Overall Diameter (mm)	Section Width (mm)	Tread Depth (mm)	Operative Norm
					Dual		Single					
					kg	kPa	kg	kPa				
7.50R16LT	12	120/116	M	6.00G	1250	670	1400	670	805	215	11.5	GB
7.50R16LT	14	122/118	M	6.00G	1320	770	1500	770	805	215	11.5	GB

- Suitable for all position of buses and the steer and trailer axle of the trucks running on high-grade road.



F830

Radial Truck and Bus Tire (Medium Haul)

Size	Ply Rating	Load Index	Speed Symbols	Rim	Max Load and Inflated Pressure				Overall Diameter (mm)	Section Width (mm)	Tread Depth (mm)	Operative Norm
					Dual		Single					
					kg	kPa	kg	kPa				
7.00R16LT	12	115/110	M	5.50F	1060	670	1215	670	775	200	10.5	GB
7.00R16LT	14	118/114	L	5.50F	1180	770	1320	770	775	200	10.5	GB

- Suitable for all position of buses and medium trucks running on the highway.



F815

Radial Truck and Bus Tire (Medium Haul)

Size	Ply Rating	Load Index	Speed Symbols	Rim	Max Load and Inflated Pressure				Overall Diameter (mm)	Section Width (mm)	Tread Depth (mm)	Operative Norm
					Dual		Single					
					kg	kPa	kg	kPa				
6.50R16LT	10	107/102	M	5.50F	850	560	975	560	750	185	10.5	GB
6.50R16LT	12	110/105	L	5.50F	925	670	1060	670	750	185	10.5	GB

- Suitable for all position of buses and medium trucks running on the high-grade road.



F835

Radial Truck and Bus Tire (Medium Haul)

Size	Ply Rating	Load Index	Speed Symbols	Rim	Max Load and Inflated Pressure				Overall Diameter (mm)	Section Width (mm)	Tread Depth (mm)	Operative Norm
					Dual		Single					
					kg	kPa	kg	kPa				
LT225/75R16	12	119/116	N	6.00	1250	650	1360	650	744	223	11.1	TRA
LT235/85R16	14	126/123	L	6 1/2L	1550	750	1700	750	806	235	8.9	TRA
ST235/85R16	14	129/125	L	6 1/2L	1650	760	1850	760	806	235	8.9	TRA
LT245/75R16	12	123/120	N	7.00	1400	650	1550	650	774	248	11.1	TRA

- Suitable for all position of buses and the steer and trailer axle of medium trucks running on the highway.





D955

Radial Truck Tire (Short Haul)

Size	Ply Rating	Load Index	Speed Symbols	Rim	Max Load and Inflated Pressure				Overall Diameter (mm)	Section Width (mm)	Tread Depth (mm)	Operative Norm
					Dual		Single					
					kg	KPa	kg	KPa				
7.00R16LT	12	115/110	M	5.50F	1060	670	1215	670	775	200	12.5	GB
7.50R16LT	12	120/116	M	6.00G	1250	670	1400	670	805	215	14.5	GB
7.50R16LT	14	122/118	M	6.00G	1320	770	1500	770	805	215	14.5	GB
8.25R16LT	12	123/119	M	6.50H	1360	560	1550	560	855	235	15.5	GB
8.25R16LT	14/14+	126/122	L	6.50H	1500	670	1700	670	855	235	15.5	GB
8.25R16LT	16	128/124	L	6.50H	1600	770	1800	770	855	235	15.5	GB
8.25R20	12	133/131	L	6.5	1950	720	2060	720	974	236	15.5	GB
8.25R20	14	136/134	L	6.5	2120	830	2240	830	974	236	15.5	GB
8.25R20	16	139/137	L	6.5	2300	930	2430	930	974	236	15.5	GB
225/70R19.5	12	125/123	M	6.8	1550	660	1650	660	811	226	14.5	TRA
225/70R19.5	14	128/126	M	6.8	1700	760	1800	760	811	226	14.5	TRA
245/70R19.5	14	133/131	M	7.5	1950	750	2060	750	839	248	15.5	ETRTO
245/70R19.5	16	136/134	L	7.5	2120	825	2240	825	839	248	15.5	ETRTO

- Drive axle for on/off road conditions.
- Deep and rigid block design for good traction.
- Cut resistance compound.



LLA78

Radial Truck Tire and Bus Tire (Long Haul)

Size	Ply Rating	Load Index	Speed Symbols	Rim	Max Load and Inflated Pressure				Overall Diameter (mm)	Section Width (mm)	Tread Depth (mm)	Operative Norm
					Dual		Single					
					kg	KPa	kg	KPa				
235/75R17.5	12	130/128	M	6.8	1800	725	1900	725	797	233	13	ETRTO
235/75R17.5	14	132/130	L/M	6.8	1900	775	2000	775	797	233	13	ETRTO
235/75R17.5	16	141/140	J	6.8	2500	850	2575	850	797	233	13	ETRTO
235/75R17.5	18	143/141	J	6.8	2575	875	2725	875	797	233	13	ETRTO
245/70R17.5	18	143/141	J	7.5	2575	875	2725	875	789	248	12	ETRTO

- Typical combined pattern.
- Suitable for all position of medium trucks and buses running on highway and normal road.



LAL812

Radial Truck and Bus Tire (Long Haul)

Size	Ply Rating	Load Index	Speed Symbols	Rim	Max Load and Inflated Pressure				Overall Diameter (mm)	Section Width (mm)	Tread Depth (mm)	Operative Norm
					Dual		Single					
					kg	KPa	kg	KPa				
195/85R16LT	12	114/112	F	5 1/2J	1120	600	1180	600	738	196	10.0	JATMA
205/85R16LT	10	117/115	L	5 1/2J	1215	600	1285	600	754	203	10.0	JATME

- Suitable for all position of buses and medium trucks running on the high-grade road.



LAM903

Radial Truck Tire (Medium Haul)

Size	Ply Rating	Load Index	Speed Symbols	Rim	Max Load and Inflated Pressure				Overall Diameter (mm)	Section Width (mm)	Tread Depth (mm)	Operative Norm
					Dual		Single					
					kg	KPa	kg	KPa				
7.50R16LT	8	112/107	F	6.00G	975	460	1120	460	805	215	9.5	GB

- Suitable for all position of trucks running on on/off road.
- High traction.





Winter Tire

1. Outstanding Braking. 2. Stability. 3. Improved Self-Cleaning.



LFW806



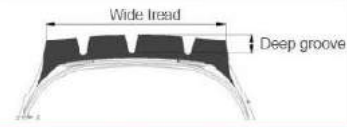
LDW807



LDW808

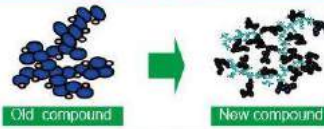
Technological Highlights

NO.1



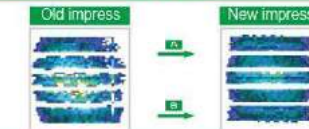
- ▶ Add the tread width and groove depth, increasing the wearing rubber by 10%.

NO.2



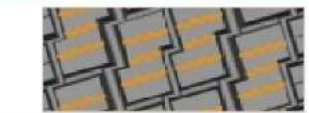
- ▶ Dedicated tread compound technology.
- ▶ New developed low temperature tread compound for good traction and braking on wet, snow and ice.

NO.3



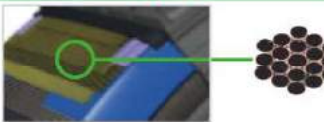
- ▶ Reduce premature irregular wear, optimize wear-rate in the arc of crown area and excellent ground contact, increase the travel distance and mileage by 10%.

NO.4



- ▶ Innovative pattern design.
- ▶ Extensive zigzag sipes to enhance the snow grip.

NO.5



- ▶ With application of HT steel cord and no welding spots steels, carcass strength is increased by 40%.

NO.6



- ▶ First marking peak symbol in domestic. Passed snow test in TUV, the first marking peak symbol on the sidewall in domestic.



LDW808



Radial Truck Tire on Ice and Snow

Size	Ply Rating	Load Index	Speed Symbols	Rim	Max Load and Inflated Pressure				Overall Diameter (mm)	Section Width (mm)	Tread Depth (mm)	Operative Norm
					Dual		Single					
					kg	kPa	kg	kPa				
6.50R16LT	12	110/105	M	5.50F	925	670	1060	670	750	185	12.0	GB
7.00R16LT	14	118/114	L	5.50F	1180	770	1320	770	775	200	13.0	GB
7.50R16LT	14	122/118	M	6.00G	1320	770	1500	770	805	215	13.0	GB
8.25R16LT	14	126/122	L	6.50H	1500	670	1700	670	855	235	15.0	GB
8R22.5	14	130/128	M	6.00	1800	830	1900	830	935	203	14.0	GB
9R22.5	14	136/134	M	6.75	2120	830	2240	830	974	229	15.0	GB
215/75R17.5	14	126/124	M	6.00	1600	700	1700	700	767	212	13.0	ETRTO
215/75R17.5	16	135/133	J	6.00	2060	850	2180	850	767	212	13.0	ETRTO
215/75R17.5	14	126/122	M	6.00	1500	760	1650	760	767	211	13.0	GB
215/75R17.5	16	127/124	J	6.00	1600	830	1750	830	767	211	13.0	GB
225/70R19.5	12	126/123	M	6.75	1550	660	1650	660	811	226	15.0	GB
225/70R19.5	14	128/126	M	6.75	1700	760	1800	760	811	226	15.0	GB
235/75R17.5	14	132/130	L/M	6.75	1900	775	2000	775	797	233	14.0	ETRTO
235/75R17.5	16	141/140	J	6.75	2500	850	2575	850	797	233	14.0	ETRTO
235/75R17.5	18	143/141	J	6.75	2575	875	2725	875	797	233	14.0	ETRTO
235/75R17.5	14	129/126	L	6.75	1700	760	1850	760	797	233	14.0	GB
235/75R17.5	16	132/128	J	6.75	1850	830	2000	830	797	233	14.0	GB
245/70R17.5	14	134/132	M	7.50	2000	775	2120	775	789	248	15.0	ETRTO
245/70R17.5	16	136/134	M	7.50	2120	850	2240	850	789	248	15.0	ETRTO
245/70R17.5	18	143/141	J	7.50	2575	875	2725	875	789	248	15.0	ETRTO
295/80R22.5	16	152/148	K	9.00	3150	850	3550	850	1044	298	20.0	ETRTO
295/80R22.5	18	152/149	K	9.00	3250	900	3550	900	1044	298	20.0	GB
315/70R22.5	16	154/150	L	9.00	3350	900	3750	900	1014	312	20.0	ETRTO
315/80R22.5	18	154/150	K	9.00	3350	825	3750	825	1076	312	20.0	ETRTO
315/80R22.5	20	156/150	K	9.00	3350	850	4000	850	1076	312	15.0	ETRTO
315/80R22.5	20	156/150	K	9.00	3350	850	4000	850	1076	312	20.0	ETRTO

- New generation product, up to 10% ice and snow performance.
- Passed snow test in TUV, the first marking peak symbol on the sidewall in domestic.
- High-density 3D blading for improving traction and braking on all road surfaces.



LFW806



Radial Truck Tire on Ice and Snow

Size	Ply Rating	Load Index	Speed Symbols	Rim	Max Load and Inflated Pressure				Overall Diameter (mm)	Section Width (mm)	Tread Depth (mm)	Operative Norm
					Dual		Single					
					kg	kPa	kg	kPa				
6.50R16LT	10	107/102	M	5.50F	850	560	975	560	750	185	11.0	GB
6.50R16LT	12	110/105	M	5.50F	925	670	1060	670	750	185	11.0	GB
7.00R16LT	12	115/110	M	5.50F	1060	670	1215	670	775	200	11.5	GB
7.00R16LT	14	118/114	L	5.50F	1180	770	1320	770	775	200	11.5	GB
7.50R16LT	14	122/118	M	6.00G	1320	770	1500	770	805	215	12.0	GB
8.25R16LT	14	126/122	L	6.50H	1500	670	1700	670	855	235	12.5	GB
11R24.5	14	146/143	M	8.25	2725	720	3000	720	1104	279	15.0	TRA
11R24.5	16	149/146	M	8.25	3000	830	3250	830	1104	279	15.0	TRA
275/70R22.5	16	148/145	M	8.25	2900	900	3150	900	958	276	15.0	ETRTO
275/70R22.5	16	144/141	M	8.25	2575	830	2800	830	958	276	15.0	GB
295/75R22.5	14	144/141	M	9.00	2575	760	2800	760	1014	298	15.0	TRA
295/75R22.5	16	146/143	M	9.00	2725	830	3000	830	1014	298	15.0	TRA
295/80R22.5	16	150/147	K	9.00	3075	830	3350	830	1044	298	15.0	GB
295/80R22.5	16	152/148	K	9.00	3150	850	3550	850	1044	298	15.0	ETRTO
315/70R22.5	16	154/150	L	9.00	3350	900	3750	900	1014	312	15.0	ETRTO
315/80R22.5	18	154/150	K	9.00	3350	825	3750	825	1076	312	15.0	ETRTO
315/80R22.5	20	156/150	K	9.00	3350	850	4000	850	1076	312	15.0	ETRTO
385/65R22.5	20	160(158)	J(L)	11.75	--	--	4500	900	1072	389	16.5	ETRTO

- High safety and good handling.
- Optimized rib contact combats uneven wear and improves wet handling and braking.
- Low noise.





LDW807 
Radial Truck Tire on Ice and Snow

Size	Ply Rating	Load Index	Speed Symbols	Rim	Max Load and Inflated Pressure				Overall Diameter (mm)	Section Width (mm)	Tread Depth (mm)	Operative Norm
					Dual		Single					
					kg	kPa	kg	kPa				
7.50R16LT	14	122/118	M	6.00G	1320	770	1500	770	805	215	14.5	GB
8.25R16LT	14	126/122	L	6.50H	1500	670	1700	670	855	235	15.5	GB
11R22.5	16	146/143	M	8.25	2725	800	3000	800	1054	279	20.0	JATMA
11R22.5	16	146/143	M	8.25	2725	830	3000	830	1054	279	20.0	TRA
11R22.5	16	148/145	L	8.25	2900	850	3150	850	1050	279	20.0	ETRTO
295/80R22.5	16	150/147	K	9.00	3075	830	3350	830	1044	298	20.0	GB
295/80R22.5	16	152/148	K	9.00	3150	850	3550	850	1044	298	20.0	ETRTO
315/70R22.5	16	154/150	L	9.00	3350	900	3750	900	1014	312	20.0	ETRTO
315/80R22.5	18	154/150	K	9.00	3350	825	3750	825	1076	312	20.0	ETRTO
315/80R22.5	20	156/150	K	9.00	3350	850	4000	850	1076	312	20.0	ETRTO

- High safety and good handing.
- Optimized rib contact combats uneven wear and improves wet handing and braking.
- Long life.



Low Profile Wide Base Tire

Technological Highlights

NO.1



Single tire instead of twinned

- ▶ Reduced user tire replace, maintenance and inventory management cost.

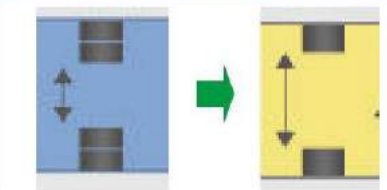
NO.2



Up to fuel efficiency

- ▶ Drive or trailer use single tire will reduced rolling resistance and fuel consumption.

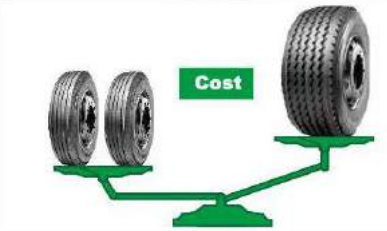
NO.3



More space between tires on one axle

- ▶ More internal vehicle space, more stable and thus better protection of goods, and less air resistance.

NO.4



Greens environmental protection

- ▶ Reduce CO2 emissions and promote ecological conservation from product.

Low Profile Wide Base Tire

1. Single tire instead of twinned.
2. Up to fuel efficiency.
3. More space between tires on one axle.
4. Greens environmental protection.



LTL863

LTL869





LTL869

Radial Truck Tire (Long Haul)



Size	Ply Rating	Load Index	Speed Symbols	Rim	Max Load and Inflated Pressure				Overall Diameter (mm)	Section Width (mm)	Tread Depth (mm)	Operative Norm
					Dual		Single					
					kg	kPa	kg	kPa				
385/55R22.5	20	160(158)	J(L)	12.25	—	—	4500	900	996	386	12.5	ETRTO
385/55R19.5	20	156	J	12.25	—	—	4000	900	919	386	12.5	ETRTO
435/50R19.5	20	160	J	14.00	—	—	4500	900	931	438	12.5	ETRTO
445/45R19.5	20	160	J	15.00	—	—	4500	900	895	446	12.5	ETRTO

- Suitable for trailer axle of the trucks running on highway.



LDL817

Radial Truck Tire (Long Haul)



Size	Ply Rating	Load Index	Speed Symbols	Rim	Max Load and Inflated Pressure				Overall Diameter (mm)	Section Width (mm)	Tread Depth (mm)	Operative Norm
					Dual		Single					
					kg	kPa	kg	kPa				
445/50R22.5	18	158	L	14.00	—	—	4250	760	1018	445	20.0	TRA
445/50R22.5	20	161	L	14.00	—	—	4625	830	1018	445	20.0	TRA
445/50R22.5	18	155	L	14.00	—	—	3875	700	1018	445	20.0	ETRTO
445/50R22.5	20	161	L	14.00	—	—	4625	850	1018	445	20.0	ETRTO

- Typical block pattern design makes good towing and grip on wet and dry road.
- Low rolling resistance.
- Wear-resistance compound, reducing shifting to prevent uneven wear.



LTL863

Radial Truck Tire (Long Haul)



Size	Ply Rating	Load Index	Speed Symbols	Rim	Max Load and Inflated Pressure				Overall Diameter (mm)	Section Width (mm)	Tread Depth (mm)	Operative Norm
					Dual		Single					
					kg	kPa	kg	kPa				
385/55R22.5	20	160(158)	J(L)	12.25	—	—	4500	900	996	386	16.5	ETRTO
385/65R22.5	20	160(158)	J(L)	11.75	—	—	4500	900	1072	389	16.5	ETRTO
425/65R22.5	20	165	L	13.00	—	—	5150	825	1124	430	17.5	ETRTO
445/65R22.5	20	169	L	14.00	—	—	5800	900	1150	454	18.0	ETRTO

- Typical combined pattern design offers optimal trailer performance.
- Low rolling resistance.
- Wear-resistance compound, reducing shifting to prevent uneven wear.



LTL811

Radial Truck Tire (Long Haul)



Size	Ply Rating	Load Index	Speed Symbols	Rim	Max Load and Inflated Pressure				Overall Diameter (mm)	Section Width (mm)	Tread Depth (mm)	Operative Norm
					Dual		Single					
					kg	kPa	kg	kPa				
445/50R22.5	18	158	L	14.00	—	—	4250	760	1018	445	10.5	TRA
445/50R22.5	20	161	L	14.00	—	—	4625	830	1018	445	10.5	TRA
445/50R22.5	18	155	L	14.00	—	—	3875	700	1018	445	10.5	ETRTO
445/50R22.5	20	161	L	14.00	—	—	4625	850	1018	445	10.5	ETRTO

- Suitable for the trailer axle of trucks running on highway.
- Low rolling resistance.
- Wear-resistance compound, reducing shifting to prevent uneven wear.





LLA38
Radial Truck Tire (Medium Haul)

Size	Ply Rating	Load Index	Speed Symbols	Rim	Max Load and Inflated Pressure				Overall Diameter (mm)	Section Width (mm)	Tread Depth (mm)	Operative Norm
					Dual		Single					
					kg	kPa	kg	kPa				
385/55R22.5	18	158	L	12.25	—	—	4250	850	996	386	16.5	ETRTO
385/55R22.5	20	160	J	12.25	—	—	4500	900	996	386	16.5	ETRTO
385/65R22.5	18	158	K	11.75	—	—	4250	850	1072	389	16.5	ETRTO
385/65R22.5	20	160	J	11.75	—	—	4500	900	1072	389	16.5	ETRTO
425/65R22.5	18	162	K	12.25	—	—	4750	760	1124	422	17.5	TRA
425/65R22.5	20	165	J/K	13.00	—	—	5150	825	1124	430	17.5	ETRTO
445/65R22.5	20	168	J/K	13.00	—	—	5600	830	1150	444	18.0	TRA
445/65R22.5	20	169	J	14.00	—	—	5800	900	1150	454	18.0	ETRTO

- Suitable for the drive and trailer axle of the heavy-duty trucks running on highway.
- Strong wear resistance.
- Good braking and grip.



T820
Radial Truck Tire (Long Haul)

Size	Ply Rating	Load Index	Speed Symbols	Rim	Max Load and Inflated Pressure				Overall Diameter (mm)	Section Width (mm)	Tread Depth (mm)	Operative Norm
					Dual		Single					
					kg	kPa	kg	kPa				
305/70R19.5	18	148/145	M	9.00	2900	850	3150	850	923	305	12.0	ETRTO
385/65R19.5	18	156	J	12.25	—	—	4000	900	919	386	12.5	ETRTO
435/50R19.5	18	156	J	14.00	—	—	4000	850	931	438	12.5	ETRTO
435/50R19.5	20	160	J	14.00	—	—	4500	900	931	438	12.5	ETRTO
445/45R19.5	18	156	J	15.00	—	—	4000	900	895	446	15.5	ETRTO
445/45R19.5	20	160	J	15.00	—	—	4500	900	895	446	15.5	ETRTO

- Suitable for trailer axle of the trucks running on highway.



T830
Radial Truck Tire (Long Haul)

Size	Ply Rating	Load Index	Speed Symbols	Rim	Max Load and Inflated Pressure				Overall Diameter (mm)	Section Width (mm)	Tread Depth (mm)	Operative Norm
					Dual		Single					
					kg	kPa	kg	kPa				
385/55R22.5	18	158	L	12.25	—	—	4250	850	996	386	15.5	ETRTO
385/55R22.5	20	160	J	12.25	—	—	4500	900	996	386	15.5	ETRTO

- Suitable for the trailer axle of trucks running on highway.
- Low rolling resistance.



LLA18
Radial Truck Tire (Long Haul)

Size	Ply Rating	Load Index	Speed Symbols	Rim	Max Load and Inflated Pressure				Overall Diameter (mm)	Section Width (mm)	Tread Depth (mm)	Operative Norm
					Dual		Single					
					kg	kPa	kg	kPa				
385/65R22.5	18	158	K	11.75	—	—	4250	850	1072	389	16.5	ETRTO
385/65R22.5	20	160	J	11.75	—	—	4500	900	1072	389	16.5	ETRTO

- Suitable for trucks of different tonnages which run on highway.
- Low fuel consumption.



LLA28
Radial Truck Tire (Long Haul)

Size	Ply Rating	Load Index	Speed Symbols	Rim	Max Load and Inflated Pressure				Overall Diameter (mm)	Section Width (mm)	Tread Depth (mm)	Operative Norm
					Dual		Single					
					kg	kPa	kg	kPa				
425/65R22.5	18	162	K	12.25	—	—	4750	760	1124	422	17.5	TRA
425/65R22.5	20	165	J/K	13.00	—	—	5150	825	1124	430	17.5	ETRTO

- Suitable for trucks of different tonnages which run on highway.
- Low fuel consumption.

