

April 2015



Corporate

CEAT SPECIALTY TYRES LTD., CEAT Mahal, 463, Dr. Annie Besant Road, Worli, Mumbai 400 030. INDIA  
Tel : +91 22 24930621 • Fax : +91 22 24933662 • Website : [www.ceat.com](http://www.ceat.com) / [www.ceatspecialty.com](http://www.ceatspecialty.com)



FARM TYRES



## INDEX

FARM	>>> F2 - AAYUSHMAAN	6
	>>> F2 - FARMAX	8
	>>> F2 - SAMRAAT	10
	>>> R1 - SAMRAAT PLUS	12
	>>> R1 - SAMRAAT SUPER	14
	>>> R1 - AAYUSHMAAN	16
	>>> R1 - FARMAX	18
	>>> R1 - IRR-O-GATOR	20
	>>> R2 - AAYUSHMAAN	22
	>>> HARVESTER - SAMRAAT SUPER XL	24
	>>> HARVESTER - AAYUSHMAAN	26
FLOTATION	>>> FLOTATION - T 422	30
	>>> TRACTION - TR 800	32
	>>> FLOTATION PLUS	34
IMPLEMENT	>>> I1 - FARM IMPLEMENT	38

## COMPANY PROFILE

**CEAT Limited** is one of India's leading tyre manufacturers with ~1 Bn USD revenue. Established in 1958, CEAT is a part of RPG Enterprises, among the top 5 business houses in India, with a group turnover of USD 3 billion.

**CEAT Specialty Tyres Ltd.** is CEAT's specialized subsidiary for Off Highway (OTR and Agri) Tyres in domestic and international markets, with a product portfolio across bias and radial tyres.

**Manufacturing Facilities** Directly employing 6000 people across 5 plants (3 in India and 2 in Sri Lanka) CEAT has a wide range of tyres for all user segments. Its range comprises of tyres for commercial segments like Trucks, Buses, Light Commercial Vehicles as well as Passenger Cars, SUVs and Two & Three Wheeler tyres for domestic use- radial & cross ply.

In the Speciality segment CEAT manufactures Farm, Mining & Earthmover, Industrial, Construction Equipment tyres and other special application Off the Road tyres.

**Technology** Significant commitment to Research and Development enables CEAT to remain at the technical forefront of the tyre industry. The company is also equipped with State-of-the-Art research, design and in-house testing facilities, which have helped the company in developing tyres of the highest quality. With 45 years of expertise, CEAT is capable of facing the challenging needs of our customers around the world.

**Market** CEAT enjoys a major market share in India where tyres are exposed to extreme operating conditions. In India, CEAT is one of the largest suppliers to OEMs particularly in OTR Earth Mover, SUV, LCV, Truck, and Tractor segment.

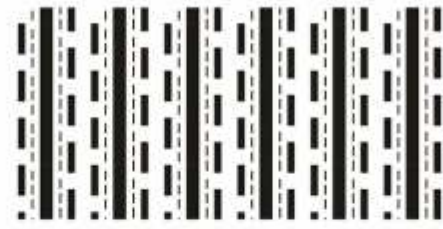
CEAT has been exporting tyres since 1964, which has helped it in getting firm foothold in the export market. Today CEAT tyres are put to service in more than 115 countries across the globe.

AIRIA and CAPEXIL have recognized CEAT's efforts with awards for 10 consecutive years for outstanding export performance.



FARM





## F2 - AAYUSHMAAN

### >>> FEATURES

- 3 Rib design with solid centre rib, High Non Skid Depth, Stone ejectors, Strong nylon casing

### >>> BENEFITS

- Longer tyre life, Improved puncture resistance



FARM



Tread

Ply

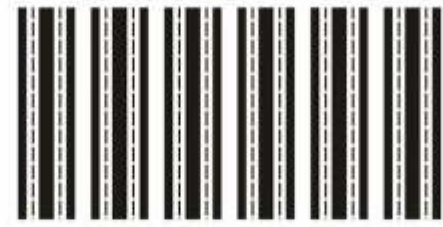
## F2 - AAYUSHMAAN



Size	Rim Width	Unloaded dimension		Static Circumference	Rolling Circumference	PR	Load Carrying Capacity				
		SW	OD				Infl. press	Load, Speed Symbol	Max Speed	Max Load	Tread Depth
		mm	mm				Bar		kmph	kg	mm
in	in	in	in	in	in	Psi		mph	lbs	in	
5.20-14	4.00E	135	634	297	1902	6 PR	4.5	75	30	450	13.5
		5.3	25.0	11.7	74.9		65	A6	19	992	0.5
6.00-16	4.5E	170	745	349	2235	8 PR	4.4	94	30	670	24
		6.7	29.3	13.7	88.0		64	A6	19	1477	0.9
7.50-16	5.50F	210	818	383	2454	8 PR	3.7	103	30	875	21
		8.3	32.2	15.1	96.6		54	A6	19	1929	0.8
6.50-20	5.00F	182	872	408	2616	8 PR	4.5	102	30	850	18
		7.2	34.3	16.1	103.0		65	A6	19	1874	0.7



**CEAT**  
SPECIALTY



# F2 - FARMAX

## FEATURES

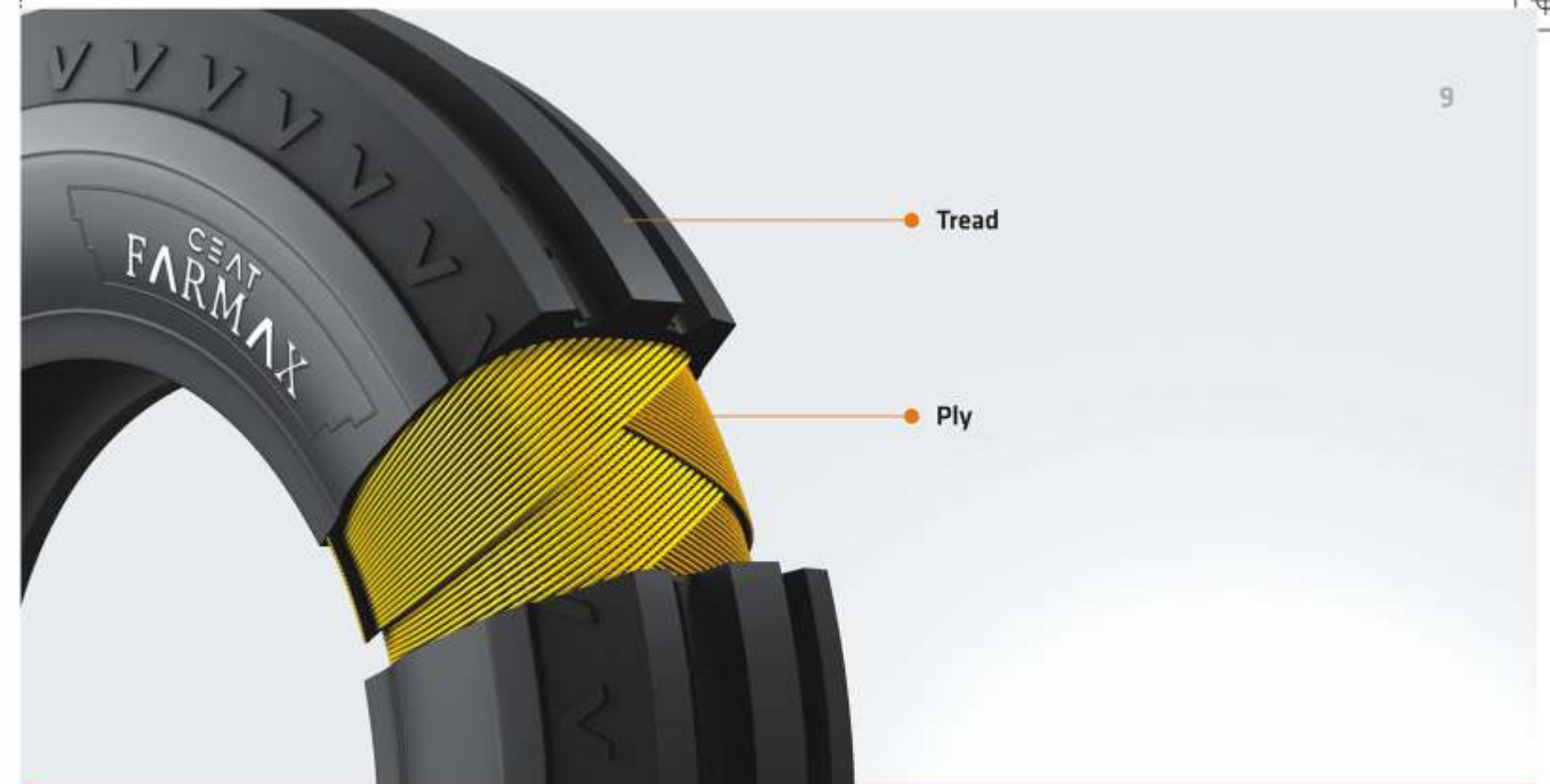
- Three Rib front wheel tyres
- Reinforced carcass

## BENEFITS

- Easy steering
- Excellent performance in tractor fitted with Implements



FARM



Tread

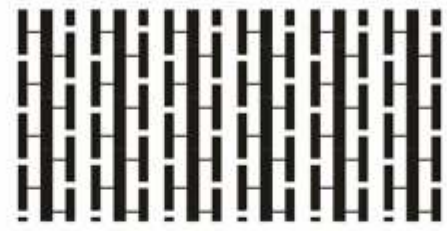
Ply

# F2 - FARMAX



Size	Rim Width	Unloaded dimension		Static Circumference	Rolling Circumference	PR	Load Carrying Capacity				
		SW	OD				Infl. press	Load, Speed Symbol	Max Speed	Max Load	Tread Depth
		mm	mm				Bar		kmph	kg	mm
		in	in				Psi		mph	lbs	in
5.00-15	4.00E	140	655	307	1965	4 PR	2.8	73	30	365	10
		5.5	25.8	12.1	77.4		41	A6	19	805	0.4
5.50-16	4.00E	150	710	332	2130	6 PR	3.7	86	30	530	12
		5.9	28.0	13.1	83.9		54	A6	19	1168	0.5
6.00-16	4.50E	165	735	344	2205	6 PR	3.4	88	30	560	17
		6.5	28.9	13.5	86.8		49	A6	19	1235	0.7
6.50-16	4.50E	175	760	356	2280	6 PR	3.1	91	30	615	17
		6.9	29.9	14.0	89.8		45	A6	19	1356	0.7
7.50-16	5.50F	205	805	377	2415	8 PR	3.7	103	30	875	20
		8.1	31.7	14.8	95.1		54	A6	19	1929	0.8
10.00-16	W8	285	910	426	2730	8 PR	2.8	115	30	1215	27
		11.2	35.8	16.8	107.5		41	A6	19	2679	1.1
11.00-16	W10	326	972	455	2916	8 PR	2.5	118	30	1320	27
		12.8	38.3	17.9	114.8		36	A6	19	2910	1.1
7.50-18	5.50F	205	860	402	2580	8 PR	3.7	106	30	950	20
		8.1	33.9	15.8	101.6		54	A6	19	2094	0.8
4.00-19	3.00D	112	712	333	2136	4 PR	3.4	72	30	355	10
		4.4	28.0	13.1	84.1		49	A6	19	783	0.4
7.50-20	5.50F	205	914	428	2742	8 PR	3.4	108	30	1030	20
		8.1	36.0	16.8	108.0		49	A6	19	2271	0.8





## F2 - SAMRAAT

### »»» FEATURES

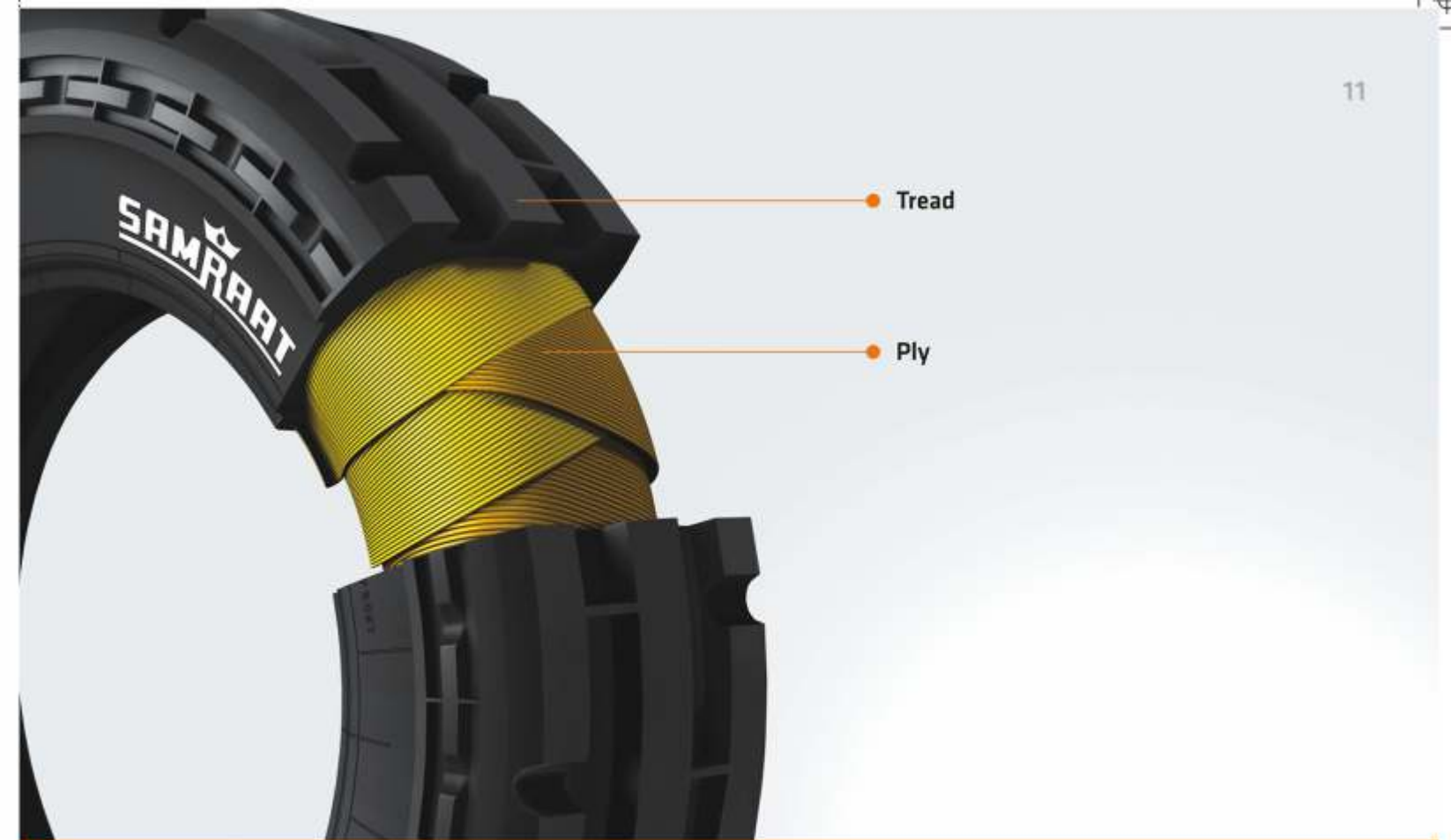
- 3 Rib front wheel
- Strong nylon casing and high grade compounds

### »»» BENEFITS

- Easy steering
- Long lasting, quality performance



FARM

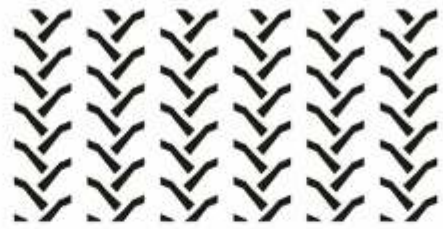


## F2 - SAMRAAT



Size	Rim Width	Unloaded dimension		Static Circumference	Rolling Circumference	PR	Load Carrying Capacity				
		SW	OD				Infl. press	Load, Speed Symbol	Max Speed	Max Load	Tread Depth
		mm	mm				Bar		kmph	kg	mm
in	in	in	in	Psi		mph	lbs	in			
5.00-15	4.00E	142	658	308	1974	4 PR	2.8	73	30	365	14.5
		5.6	25.9	12.1	77.7		41	A6	19	805	0.6
6.00-16	4.50E	165	735	344	2205	8 PR	4.5	94	30	670	16
		6.5	28.9	13.5	86.8		65	A6	19	1477	0.6
7.50-16	5.50F	205	805	377	2415	8 PR	3.7	103	30	875	20
		8.1	31.7	14.8	95.1		54	A6	19	1929	0.8
6.50-20	5.00F	175	865	405	2595	6 PR	3.1	97	30	730	18
		6.9	34.1	15.9	102.2		45	A6	19	1609	0.7





## R1 - SAMRAAT PLUS

### »»» FEATURES

- Strong lugs
- Specially designed deep lugs
- A strong nylon casing

### »»» BENEFITS

- Heavy duty service
- High traction, self cleaning properties and long service life under hardest working conditions, including on-the-road services.
- Excellent stability and guards against mechanical failures. Also suitable for industrial / construction applications.



FARM



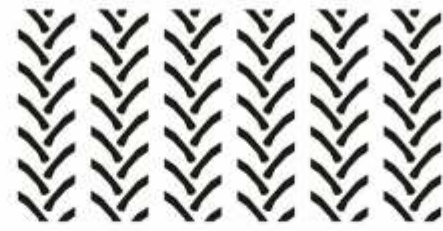
## R1 - SAMRAAT PLUS



Size	Rim Width	Unloaded dimension		Static Circumference	Rolling Circumference	PR	Load Carrying Capacity				
		SW	OD				Infl. press	Load, Speed Symbol	Max Speed	Max Load	Tread Depth
		mm	mm				Bar		kmph	kg	mm
		in	in				Psi		mph	lbs	in
16.9 - 28	W15L	429	1435	672	4305	12PR	2.4	143	30	2725	37
		16.9	56.5	26.4	169.5		.35	A6	19	6008	1.5



**CEAT**  
SPECIALTY



# R1 - SAMRAAT SUPER

## FEATURES

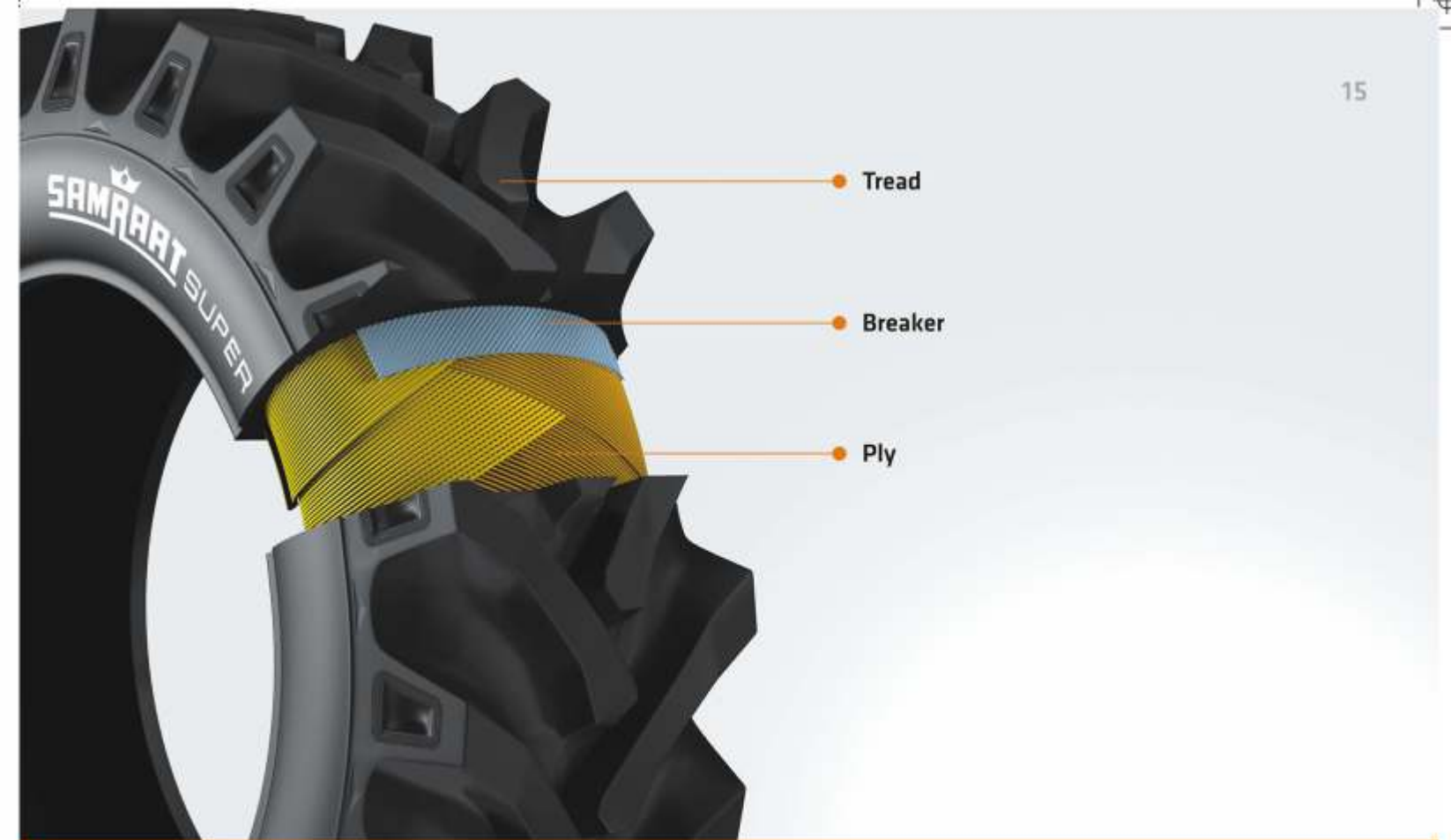
- Extra strong, deep lugs
- Dual angle design, more surface contact area
- A strong nylon casing

## BENEFITS

- High traction, self cleaning properties, better haulage in both on the road and off the road services
- Excellent stability and guards against mechanical failures. Also suitable for industrial / construction applications



FARM



# R1 - SAMRAAT SUPER

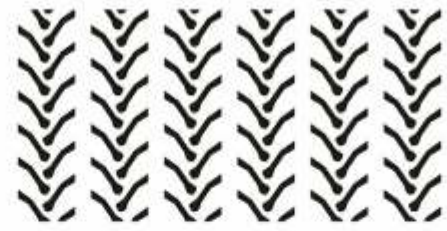


Size	Rim Width	Unloaded dimension		Static Circumference	Rolling Circumference	PR	Load Carrying Capacity				
		SW	OD				Infl. press	Load, Speed Symbol	Max Speed	Max Load	Tread Depth
		mm	mm				Bar		kmph	kg	mm
		in	in				Psi		mph	lbs	in
9.5 - 24	W8	241	1055	494	3165	8PR	2.8	112	30	1120	31
		9.5	41.5	19.4	124.6		41	A6	19	2469	1.2
12.4 - 24	W11/ W10	315	1160	543	3480	8PR	2.3	121	30	1450	30.5
	12.4	45.7	21.4	137.0	33		A6	19	3197	1.2	
12.4 - 28	W11	315	1260	590	3780	12PR	2.5	125	30	1600	37
		12.4	49.6	23.2	148.8		36	A6	19	3527	1.5
13.6 - 28	W12	356	1310	613	3930	12PR	2.3	128	30	1800	38
		14.0	51.6	24.1	154.7		33	A6	19	3968	1.5
14.9 - 28	W13/ W12	378	1365	639	4095	12PR	2.3	134	30	3120	37
	14.9	53.7	25.2	161.2	33		A6	19	6878	1.5	



**CEAT**  
SPECIALTY





# R1 - AAYUSHMAAN

## FEATURES

- Double angle design lugs, Cut resistant tread compound
- Higher Non Skid Depth, Dual angle lugs, Mud ejectors, Strong nylon casing

## BENEFITS

- High traction, Self cleaning, Excellent for haulage & field. Longer tyre life



FARM

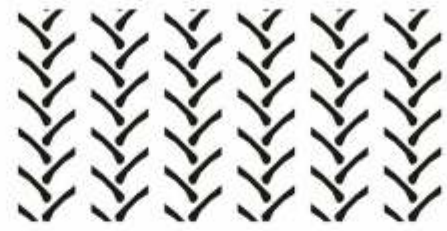


# R1 - AAYUSHMAAN



Size	Rim Width	Unloaded dimension		Static Circumference	Rolling Circumference	PR	Load Carrying Capacity				
		SW	OD				Infl. press	Load, Speed Symbol	Max Speed	Max Load	Tread Depth
		mm	mm				Bar		kmph	kg	mm
in	in	Psi		mph	lbs	in					
8-18'	W7	205	835	391	2505	4 PR	1.6	85	30	520	27
		8.1	32.9	15.4	98.6		23	A6	19	1146	1.1
11.2-24	W10	292	1115	522	3345	8 PR	2.4	116	30	1250	28
		11.5	43.9	20.5	131.7		35	A6	19	2756	1.1
12.4-28	W11	325	1276	597	3828	12 PR	2.5	125	30	1650	38
		12.8	50.2	23.5	150.7		36	A6	19	3638	1.5
13.6-28	W12	356	1320	618	3960	12 PR	2.3	128	30	1800	40
		14.0	52.0	24.3	155.9		33	A6	19	3968	1.6
14.9-28	W13	386	1380	646	4140	12 PR	2.3	134	30	2120	40.5
		15.2	54.3	25.4	163.0		33	A6	19	4674	1.6
16.9-28	W15L	442	1450	679	4350	12 PR	2.4	143	30	2725	40
		17.4	57.1	26.7	171.3		35	A6	19	6008	1.6





# R1 - FARMAX

## FEATURES

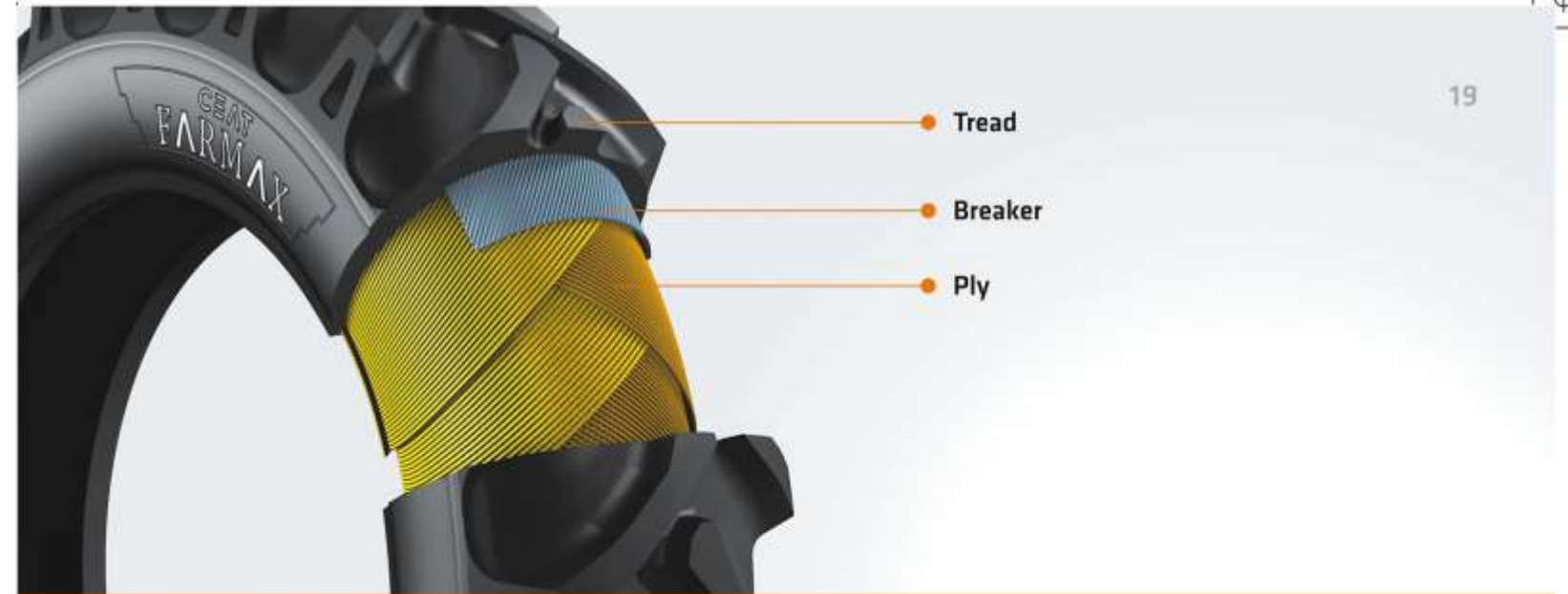
- Robust Lug design
- Dual angle tread design and reinforced carcass

## BENEFITS

- Enhanced performance on field and road
- Excellent life
- Suitable for farming and haulage purpose



FARM

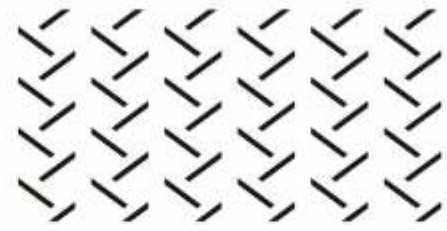


# R1 - FARMAX



Size	Rim Width	Unloaded dimension		Static Circumference	Rolling Circumference	PR	Load Carrying Capacity				
		SW	OD				Infl. press	Load, Speed Symbol	Max Speed	Max Load	Tread Depth
		mm in	mm in				Bar Psi		kmph mph	kg lbs	mm in
8.3-24	W7	209	994	465	2982	8 PR	3.1	105	30	925	29
		8.2	39.1	18.3	117.4		45	A6	19	2039	1.1
9.5-24	W8	241	1050	491	3150	8 PR	2.8	112	30	1120	29
		9.5	41.3	19.3	124.0		41	A6	19	2469	1.1
11.2-24	W10	282	1103	516	3309	8 PR	2.4	116	30	1250	30
		11.1	43.4	20.3	130.3		35	A6	19	2756	1.2
12.4-24	W11	307	1159	542	3477	8 PR	2.3	121	30	1415	33
		12.1	45.6	21.4	136.9		33	A6	19	3120	1.3
14.9-24	W13	402	1275	597	3825	8 PR	1.8	128	30	1800	35
		15.8	50.2	23.5	150.6		26	A6	19	3968	1.4
16.9-24	W15L	426	1330	622	3990	8 PR	1.7	133	30	2040	37
		16.8	52.4	24.5	157.1		25	A6	19	4497	1.5
18.4-26	W16L	492	1480	693	4440	12 PR	2.3	146	30	3000	37
		19.4	58.3	27.3	174.8		33	A6	19	6614	1.5
11.2-28	W10	295	1205	564	3615	8 PR	2.5	118	30	1320	32
		11.6	47.4	22.2	142.3		36	A6	19	2910	1.3
12.4-28	W11	323	1258	589	3774	8 PR	2.4	123	30	1550	34
		12.7	49.5	23.2	148.6		35	A6	19	3417	1.3
13.6-28	W12	343	1310	613	3930	8 PR	2	125	30	1650	37
		13.5	51.6	24.1	154.7		29	A6	19	3638	1.5
14.9-28	W13	386	1375	644	4125	8 PR	1.8	130	30	2070	35
		15.2	54.1	25.3	162.4		26	A6	19	4564	1.4
16.9-28	W15L	429	1435	672	4305	12 PR	2.4	143	30	2725	34.5
		16.9	56.5	26.4	169.5		35	A6	19	6008	1.4
16.9-30	W15L	440	1495	700	4485	10 PR	2	140	30	2455	37
		17.3	58.9	27.5	176.6		29	A6	19	5412	1.5
18.4-30	W16L	465	1564	732	4692	12 PR	2.3	149	30	3250	37.5
		18.3	61.6	28.8	184.7		33	A6	19	7165	1.5
18.4-34	W16L	465	1650	772	4950	8 PR	1.4	142	30	2650	37
		18.3	65.0	30.4	194.9		20	A6	19	5842	1.5
13.6-36	W12	350	1535	718	4605	8 PR	2	129	30	1855	35
		13.8	60.4	28.3	181.3		29	A6	19	4090	1.4
13.6-38	W12	350	1585	742	4755	8 PR	2	131	30	1950	35
		13.8	62.4	29.2	187.2		29	A6	19	4299	1.4
15.5-38	W14	400	1577	738	4731	8 PR	1.8	133	30	2060	33
		15.7	62.1	29.1	186.3		26	A6	19	4542	1.3
16.9-38	W15L	429	1685	789	5055	8 PR	2.3	137	30	2300	33.0
		16.9	66.3	31.0	199.0		33	A6	19	5071	1.3
18.4-38	W16L	465	1750	819	5250	8 PR	1.7	141	30	2575	37
		18.3	68.9	32.2	206.7		25	A6	19	5677	1.5
18.4-38	W16L	465	1750	819	5250	12 PR	2.0	143	30	2725	37.0
		18.3	68.9	32.2	206.7		29	A6	19	6008	1.5
18.4-38	W16L	465	1750	819	5250	8 PR	1.4	143	30	2725	37
		18.3	68.9	32.2	206.7		20	A6	19	6008	1.5
18.4-38	W16L	465	1750	819	5250	12 PR	2.3	152	30	3550	37
		18.3	68.9	32.2	206.7		33	A6	19	7826	1.5





# R1 - IRR-O-GATOR

## »»» FEATURES

- Strong nylon casing

## »»» BENEFITS

- High traction, self cleaning properties and long service life under tough working conditions
- Excellent stability and safety to the operator



FARM



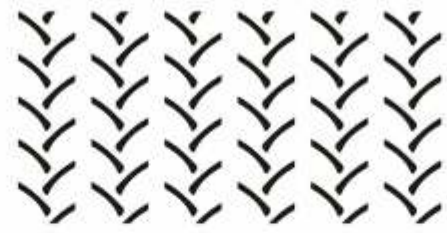
# R1 - IRRO-O-GATOR



Size	Rim Width	Unloaded dimension		Static Circumference	Rolling Circumference	PR	Load Carrying Capacity				
		SW	OD				Infl. press	Load, Speed Symbol	Max Speed	Max Load	Tread Depth
		mm	mm				Bar		kmph	kg	mm
		in	in				Psi		mph	lbs	in
11.2-24	W10	284	1105	517	3315	4 PR	1.8	110	30	1060	25
		11.2	43.5	20.4	130.5		26	A6	19	2337	1.0



**CEAT**  
SPECIALTY



## R2 - AAYUSHMAAN

### >>> FEATURES

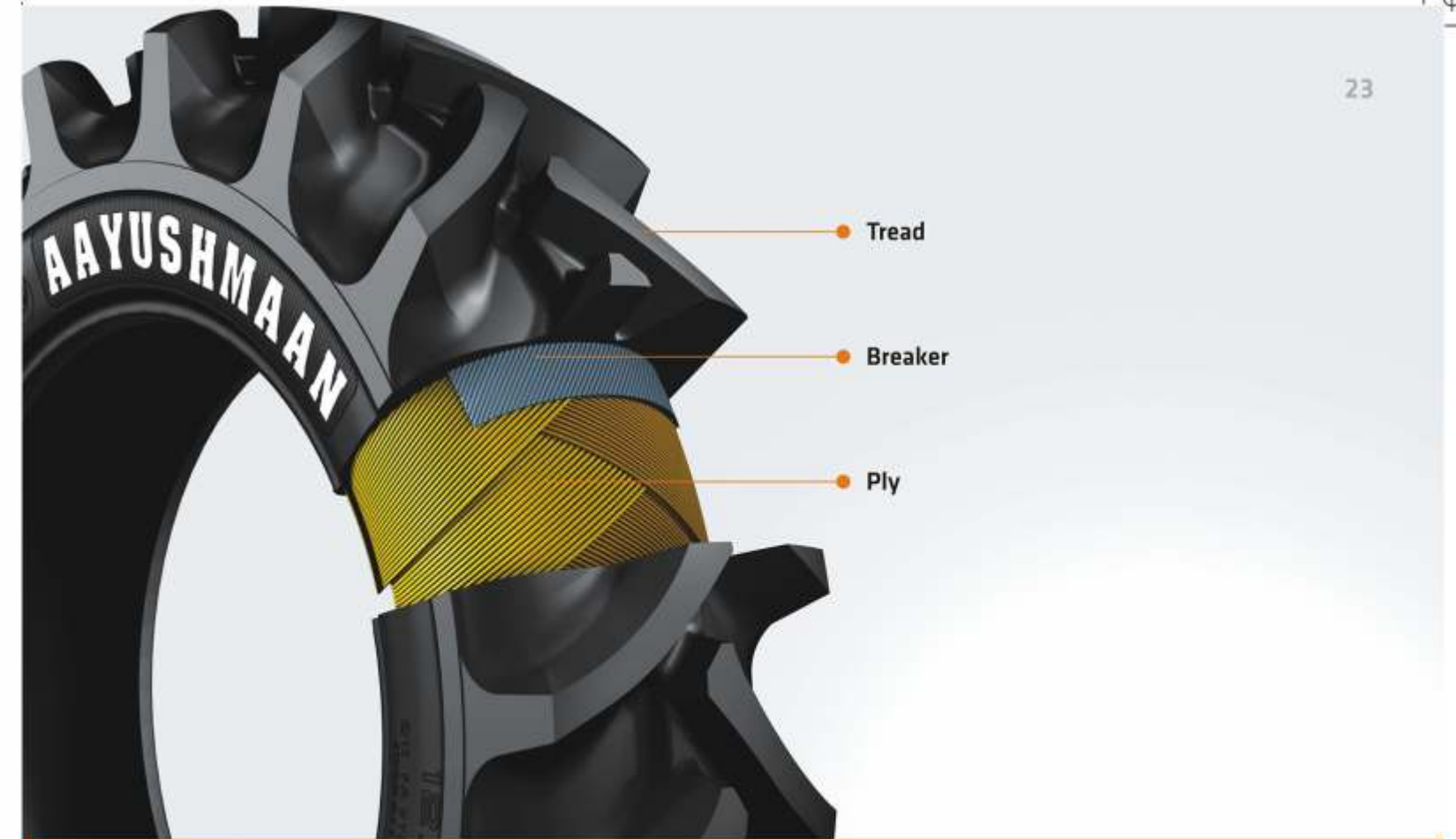
- Extra Deep Tread
- Deep lugs
- Strong nylon casing

### >>> BENEFITS

- Superior grip in muddy conditions
- Reducing slippage, providing excellent grip in muddy conditions
- Excellent stability and guards against mechanical failures



FARM

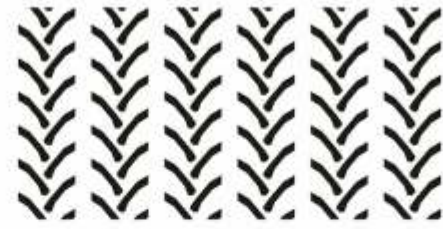


## R2 - AAYUSHMAAN



Size	Rim Width	Unloaded dimension		Static Circumference	Rolling Circumference	PR	Load Carrying Capacity				
		SW	OD				Infl. press	Load, Speed Symbol	Max Speed	Max Load	Tread Depth
		mm	mm				Bar		kmph	kg	mm
		in	in				Psi		mph	lbs	in
12.4-28	W11	325	1293	596	3815	12PR	2.5	1250	30	1650	66
		12.8	50.9	23.5	150.2		36	A6	19	3640	2.60





# HARVESTER - SAMRAAT SUPER XL

## »»» FEATURES

- Wide lugs, Strong nylon casing
- Wear and cut resistant tread compound

## »»» BENEFITS

- High traction, Self cleaning
- Better grip in both in field and road
- Excellent for harvester application



FARM



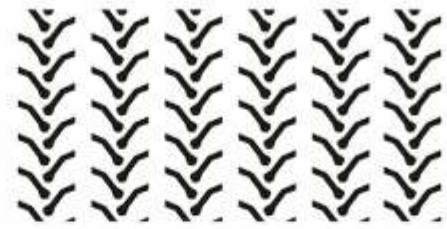
# HARVESTER - SAMRAAT SUPER XL



Size	Rim Width	Unloaded dimension		Static Circumference	Rolling Circumference	PR	Load Carrying Capacity				
		SW	OD				Infl. press	Load, Speed Symbol	Max Speed	Max Load	Tread Depth
		mm	mm				Bar		kmph	kg	mm
		in	in				Psi		mph	lbs	in
18.4-30	W16L	467	1550	725	4650	14 PR	2.6	151	30	3450	37.5
		18.4	61.0	28.6	183.1		38	A6	19	7606	1.5



CEAT  
SPECIALTY



# HARVESTER - AAYUSHMAAN

## FEATURES

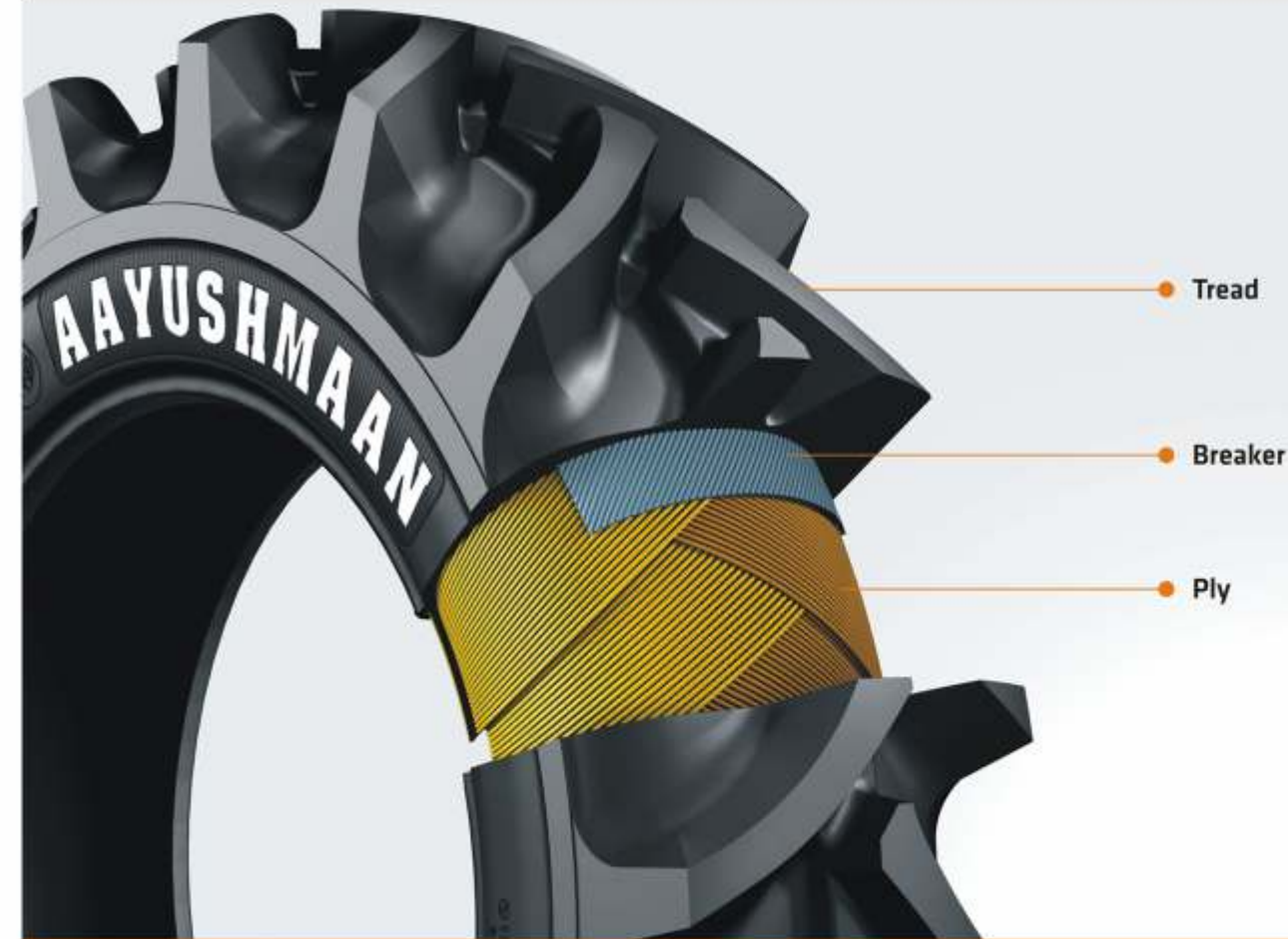
- Dual angle wide lugs, Strong nylon casing
- Wear and cut resistant tread compound

## BENEFITS

- High traction, Self cleaning
- Better grip in both in field and road
- Excellent for harvester application



FARM



# HARVESTER - AAYUSHMAAN



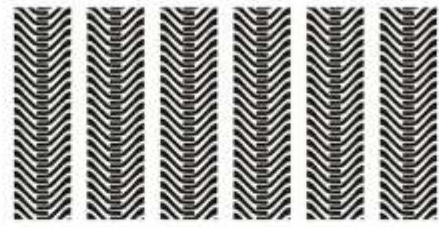
Size	Rim Width	Unloaded dimension		Static Circumference	Rolling Circumference	PR	Load Carrying Capacity				
		SW	OD				Infl. press	Load, Speed Symbol	Max Speed	Max Load	Tread Depth
		mm	mm				Bar		kmph	kg	mm
		in	in				Psi		mph	lbs	in
18.4-30	W16L	488	1575	737	4725	14 PR	2.6	151	30	3450	43
		19.2	62.0	29.0	186.0		.38	A6	19	7606	1.7





FLOTATION





## FLOTATION - T 422

### »»» FEATURES

- Flotation Tubeless tyres developed with high inner volume, low specific ground pressure
- Tough nylon casing
- High strength bead wires coupled with design of contour

### »»» BENEFITS

- Prevents damages to field and crops
- Withstands severe deflection
- Withstands high stress in the bead region
- Suitable for both on and off road agricultural service



FLOTATION



- Tread
- Breaker
- Ply

## FLOTATION - T422

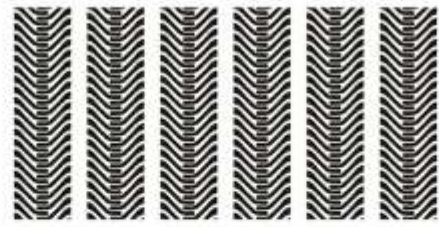


Size	Rim Width	Unloaded dimension		Static Circumference	Rolling Circumference	PR	Load Carrying Capacity						
		SW	OD				Infl. press	Load, Speed Symbol		Max Speed	Max Load (Free Rolling)	Max Load (Drive Wheel)	Tread Depth
								Free Rolling	Drive wheel				
550/45-22.5	16.00 DC	550	1070	470	3205	12 PR	2.1	153/149	141/137	40	3650	2575	25
		21.7	42.1	18.5	126.2	16 PR	30	A8/B	A8/B	25	8047	5677	1.0
500/60-22.5	16.00 DC	500	1170	510	3380	12 PR	2.8	159/156	147/143	40	4375	3075	25
		19.7	46.1	20.1	133.1	16 PR	41	A8 / B	A8 / B	25	9645	6779	1.0
550/60-22.5	16.00 DC	550	1238	540	3720	12 PR	2.4	157/154	145/142	40	4125	2900	25
		21.7	48.7	21.3	146.5	16 PR	35	A8/B	A8/B	25	9094	6393	1.0
600/50-22.5	20.00 DC	600	1170	510	3498	12 PR	3.2	163/159	151/148	40	4875	3450	25
		23.6	46.1	20.1	137.7	16 PR	46	A8/B	A8/B	25	10748	7606	1.0
600/55-22.5	20.00 DC	600	1238	540	3715	12 PR	2.3	160/156	148/144	40	4500	3150	25
		23.6	48.7	21.3	146.3	16 PR	33	A8/B	A8/B	25	9921	6945	1.0
600/55-26.5	20.00 DC	600	1333	585	3986	12 PR	2	159/156	147/144	40	4375	3075	24
		27.6	46.1	20.1	138.7	16 PR	29	A8/B	A8/B	25	9645	6779	0.9
700/40-22.5	24.00 DC	700	1170	510	3522	12 PR	2.6	165/161	153/149	40	5150	3650	24
		27.6	49.0	21.7	146.1	16 PR	38	A8/B	A8/B	25	11354	8047	0.9
700/50-22.5	24.00 DC	700	1245	550	3710	12 PR	2	164/160	151/148	40	5000	3450	24
		27.6	52.5	23.0	156.9	16 PR	29	A8/B	A8/B	25	11023	7606	0.9
700/50-26.5	24.00 DC	700	1333	585	3986	12 PR	2.6	169/166	156/153	40	5800	4000	24
		27.6	49.0	21.7	146.1	16 PR	38	A8/B	A8/B	25	12787	8818	0.9
800/45-26.5	16.00 DC	800	1343	585	4016	12 PR	2	165/161	153/149	40	5150	3650	25
		31.5	52.9	23.0	158.1	16 PR	29	A8/B	A8/B	25	11354	8047	1.0
800/45-26.5	16.00 DC	800	1343	585	4016	12 PR	2.2	168/164	156/153	40	5600	4000	24
		31.5	52.9	23.0	158.1	16 PR	32	A8/B	A8/B	25	12346	8818	0.9
800/45-26.5	16.00 DC	800	1343	585	4016	12 PR	2.2	166/162	154/150	40	5300	3785	24
		31.5	52.9	23.0	158.1	16 PR	38	A8/B	A8/B	25	11684	8344	0.9
800/45-26.5	16.00 DC	800	1343	585	4016	12 PR	2.2	168/164	156/153	40	5600	4000	24
		31.5	52.9	23.0	158.1	16 PR	32	A8/B	A8/B	25	12346	8818	0.9
800/45-26.5	16.00 DC	800	1343	585	4016	12 PR	1.8	169/165	157/154	40	5800	4125	24
		31.5	52.9	23.0	158.1	16 PR	26	A8/B	A8/B	25	12787	9094	0.9
800/45-26.5	16.00 DC	800	1343	585	4016	12 PR	2.4	174/170	162/158	40	6700	4750	24
		31.5	52.9	23.0	158.1	16 PR	35	A8/B	A8/B	25	14771	10472	0.9
800/45-26.5	16.00 DC	800	1343	585	4016	12 PR	1.7	170/167	158/155	40	6000	4250	24
		31.5	52.9	23.0	158.1	16 PR	25	A8/B	A8/B	25	13228	9370	0.9
800/45-26.5	16.00 DC	800	1343	585	4016	12 PR	2.2	177/173	164/160	40	7300	5000	24
		31.5	52.9	23.0	158.1	16 PR	32	A8/B	A8/B	25	16094	11023	0.9



CEAT SPECIALTY





## TRACTION - TR 800

### >>> FEATURES

- Specially engineered tread pattern

### >>> BENEFITS

- Designed to carry high load
- Excellent traction to drive wheel
- Suitable for free rolling as well as drive wheel applications



FLOTATION

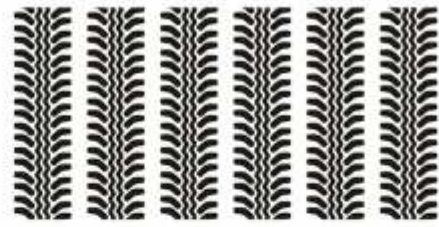


## TRACTION - TR 800



Size	Unloaded dimension			Static Circumference	Rolling Circumference	PR	Load Carrying Capacity						
	Rim Width	SW	OD				Infl. press	Load, Speed Symbol	Max Speed	Max Load (Free Rolling)	Max Load (Drive wheel)	Tread Depth	
		mm	mm				mm	Bar	Free Rolling/ Drive wheel	kmph	kg	kg	mm
		in	in				in	Psi		mph	lbs	lbs	in
400/60-15.5	13	400	876	385	2575	14 PR	3.6	145/132	40	2900	2000	17	
		15.7	34.5	15.2	101.4		52	A8	25	6393	4409	0.7	





## FLOTATION PLUS

### »»» FEATURES

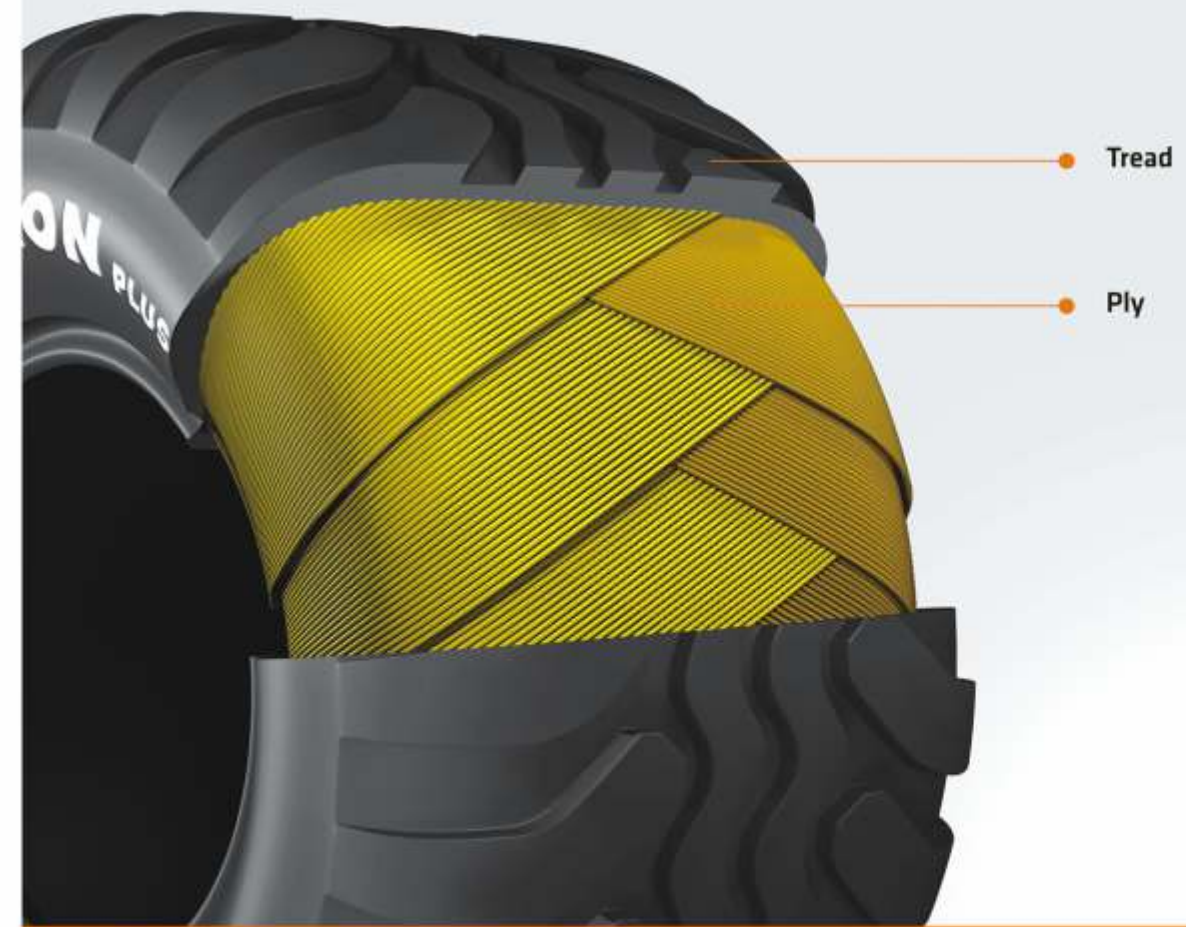
- Flotation Tubeless tyres developed with high inner volume, low specific ground pressure
- Tough nylon casing
- High strength bead wires coupled with design of contour

### »»» BENEFITS

- Prevents damages to fields and crops
- Withstands severe deflection
- Withstands high stress in the bead region
- Suitable for both on and off road agricultural service



FLOTATION



## FLOTATION PLUS



Size	Rim Width	Unloaded dimension		Static Circumference	Rolling Circumference	Infl. press	Load Carrying Capacity				Tread Depth
		SW	OD				Load, Speed Symbol	Max Speed	Max Load (Free Rolling)	Max Load (Drive wheel)	
		mm	mm				Free Rolling / Drive wheel	kmph	kg	kg	
		in	in				psi	mph	lbs	lbs	
480/45-17	16.00 DC	490	866	405	2598	3.2	146/134	40	3000	2120	16
		19.3	34.1	16.0	102.3	46	A8	25	6614	4674	0.6
500/50-17	16.00 DC	500	950	445	2850	2.8	149/137	40	3250	2240	16
		19.7	37.4	17.5	112.2	41	A8	25	7165	4938	0.6

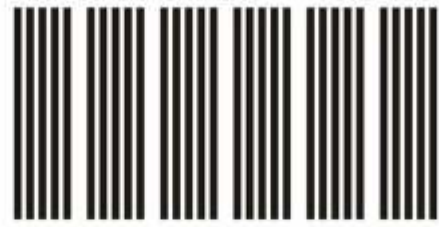


CEAT  
SPECIALTY



**IMPLEMENT**





# I1 - FARM IMPLEMENT

## FEATURES

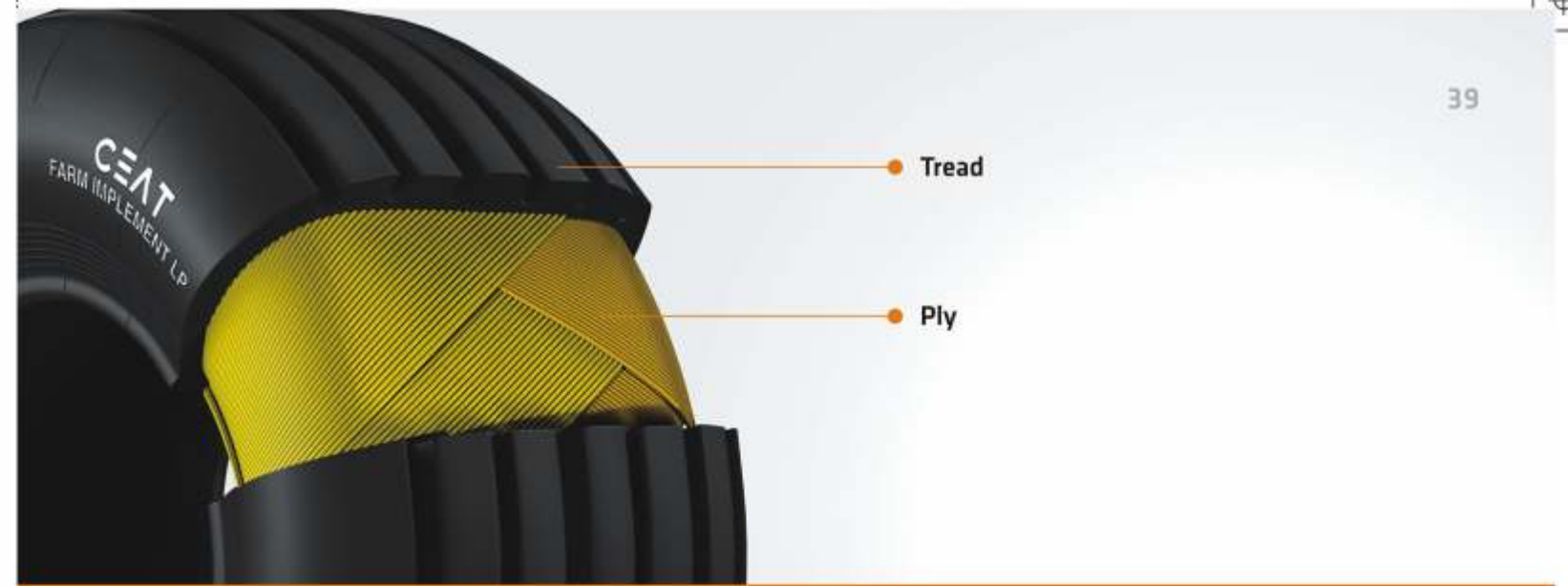
- Multi rib low section design
- Extra wide tread and high volume

## BENEFITS

- High floatation
- High load carrying capacity at low inflation pressure
- Suitable for both on-off road application



IMPLEMENT



Tread

Ply

# I1 - FARM IMPLEMENT



Size	Rim Width	Unloaded dimension		Static Circumference	Rolling Circumference	PR	Load capacity				
		SW	OD				Infl. press	Static	15 kmph 10 mph	50 kmph 31 mph	Tread Depth
		mm	mm				Bar	kg	kg	kg	mm
		in	in				Psi	lbs	lbs	lbs	in
7.60-15 SL	5.5	193	734	344	2202	6 PR	2.8	1600	920	800	7.0
		7.6	28.9	13.5	86.7	8 PR	3.6	1900	1095	950	0.3
9.5L-15 SL	7	241	767	341	2247	6 PR	2.2	1850	1065	925	7.0
						8 PR	3	2240	1290	1120	
		9.5	30.2	13.4	88.5	10 PR	3.7	2525	1465	1275	0.3
						12 PR	4.4	2900	1670	1450	
11L-15 SL	8 LB	279	777	345	2331	6 PR	1.9	1950	1120	975	8.0
						8 PR	2.5	2300	1325	1150	
		11.0	30.6	13.6	91.8	10 PR	3	2640	1515	1320	0.3
						12 PR	3.6	2900	1670	1450	
12.5-15 SL	10 LB	318	823	363	2411	8 PR	2.5	2720	1565	1360	9.0
		12.5	32.4	14.3	94.9	10 PR	3	3100	1780	1550	
						12 PR	3.6	3500	2015	1750	

